



**2024** | PRODUCT  
CATALOG



Condor Outdoor Products, Inc. has been providing tactical gear and apparel from Southern California since 1994 and has established a brand reputation of high quality and affordable products amongst retailers and first responders globally.

We have a wide range of tactical gear and apparel that includes everything from highly specialized outdoor jackets to state-of-the-art backpacks, gear bags, uniforms, and much more. We also have products with genuine Multi-cam and OCP for military personnel. Our catalog grows every year as we continue to adapt and innovate to the needs of the industry.

Our products are field-tested everyday by first responders and outdoor enthusiasts worldwide to ensure they provide the function and durability to get the job done.

**CONDOR OUTDOOR PRODUCTS, INC**

*5268 Rivergrade Road, Irwindale, CA 91706*

*Tel 800.552.2554 | Fax 626.303.3383*

*Email [Info@condoroutdoor.com](mailto:Info@condoroutdoor.com)*

***[WWW.CONDOROUTDOOR.COM](http://WWW.CONDOROUTDOOR.COM)***





## ***CONTENTS***

04

FEATURES/COLOR KEY

---

05

APPAREL

---

36

TACTICAL VEST

---

59

BAGS/PACKS

---

84

MODULAR POUCHES

---

100

TACTICAL GLOVES

---

102

TACTICAL BELTS

---

111

LEG RIGS

---

116

TACTICAL SLINGS

---

121

HEADWEAR/NECKWEAR

---

127

ACCESSORIES

---

# FEATURES



## AIR-FLOW SYSTEM

Constructed with air-flow mesh back panels to maximize ventilation and back support.



## DURABLE WATER REPELLENT

A polymer substance applied to the face-fabric that helps to repel water, oil and stains, and dries quicker.



## MOISTURE WICKING

Moisture-wicking fabric pulls sweat away from the skin to keep you dry and comfortable.



## ANTI-MICROBIAL

Anti-microbial material inhibits the growth and reproduction of microorganisms or bacteria.



## NATURAL STRETCH

Stretchable fabric for better articulation and/or gussets to maximize mobility and movement.



## HYDRATION COMPATIBLE

Product with integrated hydration compartment to carry a hydration bladder.



## WATER RESISTANT

Material that resists the penetration of water through the fabric.



## BREATHABLE

A fabric that allows the passage of air and moisture to keep you comfortable.



## CHARCOAL FIBER

Natural charcoal infused fabric absorbs unwanted odors, bacteria, and sweat.



## ANTI-STATIC

Anti-static material inhibits buildup of static electricity



## CONCEALED CARRY

Designed for more discreet or concealed method of carrying firearm.



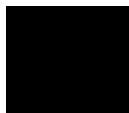
## LAPTOP COMPATIBLE

Product with built-in compartment for laptops.

# COLOR KEY



001 OLIVE DRAB



002 BLACK



003 TAN



004 KHAKI



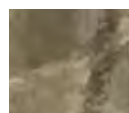
006 NAVY



007 URBAN GREEN



008 MULTICAM®



009 A-TACS® AU



010 RED



015 A-TACS® FG



016 KRYPTEK® HIGHLANDER



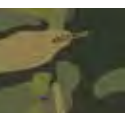
017 KRYPTEK® MANDRAKE



018 GRAPHITE



019 BROWN



020 MULTICAM® TROPIC



021 MULTICAM® BLACK



022 MULTICAM® ARID



023 KRYPTEK® TYPHON



024 KRYPTEK® NOMAD



025 RANGER GREEN



026 COBALT



027 SLATE



028 CHARCOAL



029 FLAT DARK EARTH



030 STONE



031 GUNMETAL



032 INDIGO



033 BLUE BLACK



034 WHITE



035 WOODLAN



037 BLAZE ORANGE



038 SILVER TAN



039 FOREST GREEN



040 SHERIFF BROWN



041 DARK NAVY



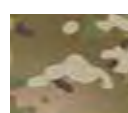
042 SAND



498 COYOTE BROWN



499 COYOTE TAN



800 SCORPION



RWB RED, WHITE, BLUE



**APPAREL**

800.552.2554 | [CONDOROUTDOOR.COM](http://CONDOROUTDOOR.COM)



YKK



## SUMMIT SOFTSHELL JACKET

SKU: 602

SIZE: XS-XXXL

The Condor Summit is designed for comfort and utility. The three layer integrated shell with its water resistant fabric wicks moisture while maintaining body heat. Equipped with underarm vents for temperature control, reinforcement on the forearms, and multiple pockets for utility and storage make the jacket comfortable and versatile.

### FEATURES

- Stow-away
- Two bicep pockets
- Double zipper back pocket
- Drawstring waistband
- Double layer reinforced forearm
- Two 3.5"W x 4"H shoulder patch panels

WATER  
RESISTANT

DWR



BREATHABLE

001

002

006

018

498

#### MATERIALS:

100% polyester 4-way stretch shell / breathable  
membrane / micro fleece lining



LINED STAND-UP COLLAR



FOREARM POCKET

YKK

## PHANTOM SOFTSHELL JACKET

SKU: 606

SIZE: XS-XXXL

The Condor Phantom is designed with a three-layer shell fabric system to resist water penetration, wick away moisture, and provide breathability and comfort while maintaining warmth. Designed with pockets for storage and forearm reinforcement, the Phantom is a jacket made for comfort and utility.

### FEATURES

- Dual slider YKK® zipper with Storm-Guard flap
- Vertical chest and hand pockets
- Hook and loop cuff adjustment
- Underarm vent zipper
- Drawstring waistband

WATER  
RESISTANT

DWR



BREATHABLE

001

002

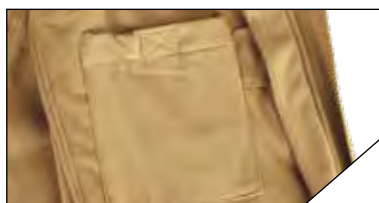
006

018

498

#### MATERIALS:

100% polyester 4-way stretch shell / breathable  
membrane / micro fleece lining



LEFT INTERIOR POCKET



RIGHT INTERIOR POCKET



YKK



## SUMMIT ZERO SOFTSHELL

SKU: 609

SIZE: S-XXXL

The Summit Zero answers the call to carry all that you need without being bogged down. Designed to have increased articulation, comfort, and breathability when in the field. Summit Zero's feather weight construction reduces weight by 30% compared to the traditional Summit, while still providing much of the same protection.

### FEATURES

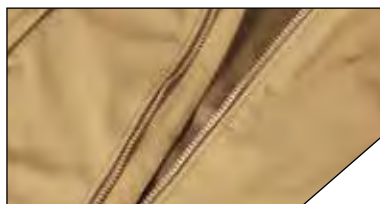
- Two internal pockets
- Two bicep pockets
- Double zipper back pocket
- Drawstring waistband
- Double layer reinforced forearm
- Two 3.5"W x 4"H shoulder patch panels

WATER  
RESISTANT

DWR



BREATHABLE



STORM GUARD FLAP



STOW-AWAY HOODY

001

002

006

018

498

#### MATERIALS:

100% polyester 4-way stretch shell / breathable  
membrane / micro fleece lining

YKK

## WESTPAC SOFTSHELL JACKET

SKU: 101166

SIZE: XS-XXXL

The Condor Westpac Softshell Jacket is the ideal outerwear for tactical applications. This jacket is designed with a three-layer shell fabric system to resist water penetration, wick away moisture, and provide breathability for superior comfort while maintaining warmth. With multiple pockets for storage, such as two sleeve pockets, it's easy to keep essential supplies within reach.

### FEATURES

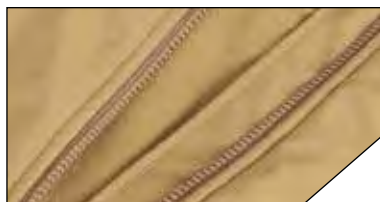
- Two slash hand pockets
- Two bicep pockets
- Two shoulder patch panels
- Two internal pockets
- Drawstring waistband
- Reinforced elbow

WATER  
RESISTANT

DWR



BREATHABLE



STORM GUARD FLAP



UNDERARM VENT ZIPPER

002

006

498

#### MATERIALS:

100% polyester 4-way stretch shell / breathable  
membrane / micro fleece lining





## ALPHA FLEECE JACKET

SKU: 601

SIZE: S-XXXL

The Condor Alpha is designed to be lightweight while providing breathability, comfort, and warmth. Equipped with abrasion resistant collar and elbows, and plenty pockets for storage, it is perfect for field operation.

### FEATURES

- 100% polyester with Oxford reinforcement
- Abrasion-reinforced collar, shoulder, and forearm
- Two-inch extendable sleeve with thumb-hole
- Drawstring waistband
- Two 3.5"W x 4"H shoulder patch panels



BREATHABLE

001

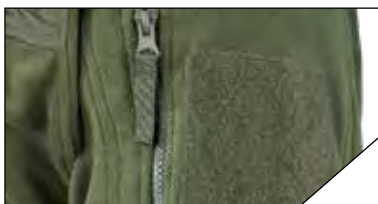
002

006

498

#### MATERIALS:

100% polyester fleece with mesh lining



POCKET WITH PATCH PANEL



THUMB HOLE

YKK



## NIMBUS LIGHT LOFT JACKET

SKU: 101097

SIZE: S-XXL

The Condor Nimbus is incredibly lightweight, highly compressible, and provides superior warmth and protection in extreme conditions. Built for mobility and trim bulk, its water repellent exterior will shed moisture, while its synthetic PrimaLoft™ insulation will shield you from the cold. The Nimbus is the layer you'll reach for all year-round.

### FEATURES

- 60g PrimaLoft™ insulation
- Water resistant nylon outer shell
- 3 exterior pockets for storage
- Stretchable softshell side panels
- Interior pockets for additional storage


WATER  
RESISTANT


BREATHABLE



002

018

#### MATERIALS:

100% nylon shell with  
60g PrimaLoft™ Silver insulation


STRETCH PANEL



CHEST POCKET





002

006

**MATERIALS:**

100% polyester 4-way stretch shell / breathable membrane / micro fleece lining

**CORE SOFTSHELL VEST**

SKU: 10616

SIZE: S-XXL

The Condor Core Vest is designed for daily use to keep your vitals warm during cooler weather or seasons. The low cut arm holes are designed to give user greater articulation and ventilation. It's made with softshell material to stop the wind, and is equipped with interior and exterior pockets to carry essential items.

**FEATURES**

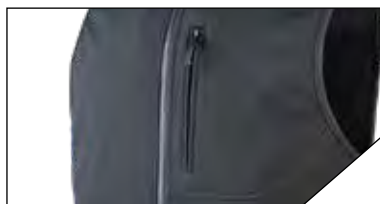
- Full front YKK® zipper with dual sliders
- Zipper with Storm-Guard flap
- Micro fleece lined interior
- Drawstring waistband
- Two low-profile hand pockets
- One inner chest pocket

WATER  
RESISTANT

DWR



BREATHABLE



VERTICAL CHEST POCKET



INTERIOR POCKET



001

002

498

**MATERIALS:**

100% micro fleece

**QUARTER ZIP FLEECE PULLOVER**

SKU: 607

SIZE: S-XXL

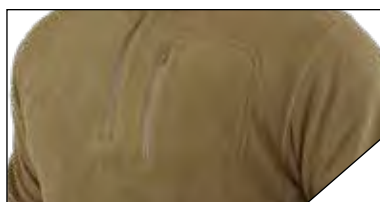
The Condor Quarter Zip Fleece is made with functionality and comfort in mind. Equipped with reinforced elbows, storage pockets, and made with flat seam construction, this fleece will go the distance with you.

**FEATURES**

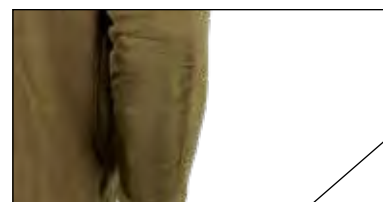
- Flat seam construction
- Vertical chest pocket with zipper
- Quarter zip neck for ventilation control
- Quarter zip neck for ventilation control
- Quarter zip neck for ventilation control
- Abrasion-reinforced elbow

MOISTURE  
WICKING

BREATHABLE



CHEST POCKET



REINFORCED ELBOW

# BASE LAYERS

001 002 042 498 498

## MATERIALS 95% POLYESTER/5% SPANDEX

The grid design creates open air circulation for improve breathability and reduce fabric load.

## TECH



MOISTURE  
WICKING



BREATHABLE



NATURAL  
STRETCH

# GRID TECHNOLOGY

015

APPAREL

INTERIOR

EXTERIOR



OPEN AIR  
CIRCULATION



EFFICIENT  
EVAPORATION



REDUCE  
FABRIC MASS



HYDROPHILIC  
ABSORPTION



**BASE II CREW  
PULLOVER**

101228

SIZE: S-XXL



**BASE II ZIP  
PULLOVER**

603

SIZE: S-XXL



**BASE II MID-WEIGHT  
DRAWER**

604

SIZE: S-XXL

ONLY AVAILABLE IN 001, 002, 499

800.552.2554 | [CONDOROUTDOOR.COM](http://CONDOROUTDOOR.COM)



## RUNNING SHORTS

SKU: 101159 SIZE: S-XL

Condor Running Shorts are breathable, lightweight, and most importantly, comfortable. The shorts are made of a special nylon mesh fabric that moves with your body and helps keep you cool in hot weather or during periods of intense training.

### FEATURES

- Brief liner
- Elastic waist band
- Micro fleece lined interior
- Hidden key pocket
- 2.25" inseam

**MATERIALS:**  
100% nylon



## ARM SLEEVES

SKU: 221110 SIZE: M-L

### FEATURES

- UV sun protection
- Moisture-wicking & breathable
- Slip resistant armband
- Stretchable nylon fabric
- Abrasion protection

**MATERIALS:**  
100% nylon





## MAXFORT TRAINING TOP

SKU: 101076 SIZE: S-XXL

Condor's Maxfort Training Top is made to keep you pushing your limits. Treated poly fabric with moisture wicking, anti-microbial, and odor resistant finishes provides maximum performance and comfort. The light compression of the shirt expels heat from your body, keeping you cool as you dominate your workout.

### FEATURES

- Breathable fabric keeps you dry and comfortable
- Ribbed collar for ventilation
- Anti-microbial & odor resistant
- Tagless label

**MATERIALS:**  
96% polyester / 4% charcoal fiber



001

002

003

006

018

499



## MAXFORT LONG SLEEVE TRAINING TOP

SKU: 101121 SIZE: S-XXL

Condor's Maxfort Long Sleeve Training Top is made to keep you pushing your limits. Treated poly fabric with moisture wicking, anti-microbial, and odor resistant finishes provides maximum comfort. The light compression of the shirt expels heat from your body, keeping you cool as you dominate your workout.

### FEATURES

- Breathable fabric keeps you dry and comfortable
- Ribbed collar for ventilation
- Anti-microbial & odor resistant
- Two low-profile hand pockets
- Tagless label

**MATERIALS:**  
96% polyester / 4% charcoal fiber



001

002

003

006

499



## MILITARY TEE

SKU: 101277 SIZE: S-XXXL

The Condor Men's Crewneck T-Shirt is built with classic comfort that meets a variety of your athletic needs. Constructed from cotton-polyester blended fabric, this athletic fit t-shirt is soft, lightweight and breathable. A reinforced double stitched crew neckline offers excellent durability and retains its shape, wear after wear. Worn alone or as a layer, this Condor tee is an everyday essential.

### FEATURES

- Double stitched ribbed collar to retain its shape
- Flat seam and tagless for comfort
- Perfect fabric blend offers softness, breathability, flexibility, and durability
- Athletic Fit

**MATERIALS:**  
4oz Blend, 50% Cotton, 50% Polyester



001

002

499

# COMBAT SHIRTS

001 002 003 006 018 800

**MATERIALS** SLEEVE & COLLAR: 63% POLYESTER / 34% COTTON / 3% SPANDEX RIP-STOP

92% POLYESTER 8% SPANDEX JERSEY | 96% POLYESTER 4% CHARCOAL FIBER MESH |  
63% POLYESTER 34% COTTON 3% SPANDEX | OCP RIPSTOP MATERIAL: 50% nylon / 50% cotton

## TECH



ANTI-STATIC



ANTI-MICROBIAL



MOISTURE WICKING



CHARCOAL FIBER



### GEN II COMBAT SHIRT LONG SLEEVE

101281

SIZE: S-XXL

001

002

003

006

018

800

SIZE: 002, 006: XS-XXL  
001, 003, 018, 800: S-XXXL



### GEN II COMBAT SHIRT SHORT SLEEVE

101293

SIZE: S-XXXL

001

002

003

006

800

## NEW FEATURES



BICEP POCKET WITH PEN SLOTS



PLEATED BICEP POCKET



LOW PROFILE ZIPPER GUARD





001

002

003

**MATERIALS:**

92% Poly / 8% Spandex Jersey,  
96% Poly / 4% Charcoal fiber Mesh

**TRIDENT BATTLE TOP LONG SLEEVES**

SKU: 101206 SIZE: S-XXL

The Condor Trident Long Sleeve Battle Top combines soft knitted jersey with UV blocking characteristic, breathable and moisture-wicking mesh panels provide airflow. This dual-fabric combination will keep you running cool & dry in any sweltering environments.

**FEATURES**

- Raglan cut sleeves for improved range of motion
- Anti-static, anti-microbial, and moisture wicking mesh
- 4"x 5" loop panels on each sleeve
- Quarter zip



ANTI-STATIC



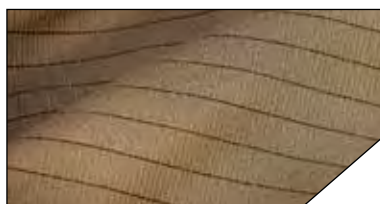
ANTI-MICROBIAL



MOISTURE WICKING



CHARCOAL FIBER



CHARCOAL INFUSED FABRIC



MULTI FABRIC CONSTRUCTION



001

002

003

006

018

**MATERIALS:**

92% Poly / 8% Spandex Jersey,  
96% Poly / 4% Charcoal fiber Mesh

**TRIDENT BATTLE TOP SHORT SLEEVE**

SKU: 101117 SIZE: S-XXL

The Condor Trident Battle Top is designed to be used in hot weather conditions. Constructed with lightweight, breathable, and moisture-wicking fabric, it will keep you cool and dry in the hottest environments.

**FEATURES**

- Raglan cut sleeves for improved range of motion
- Moisture wicking and quick-drying
- Anti-static, anti-microbial
- 4"x 5" loop panels on each sleeve
- Low cut quarter zip collar



ANTI-STATIC



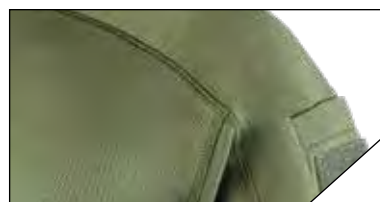
ANTI-MICROBIAL



MOISTURE WICKING



CHARCOAL FIBER



MULTI FABRIC CONSTRUCTION



SLEEVE POCKET

**MEN'S LONG SLEEVE POLO**

101120

SIZE: S - XXXL

**MEN'S SHORT SLEEVE POLO**

101060

SIZE: S-XXXL

**WOMEN'S SHORT SLEEVE POLO**

101194

SIZE: S-XXL

ONLY AVAILABLE IN 002, 006



## PERFORMANCE TACTICAL POLO

001 002 006 018 038 042

The Condor Performance Tactical Polo is our re-vamped on duty essential. The fabric is now knitted polyester that is treated to help wick more moisture and constructed to allow for better ventilation. The PTP holds true to its signature features such as the dual pen pockets, and microphone and sunglass clips.

### MATERIALS

90% POLYESTER/4% CHARCOAL FIBER



#### CHARCOAL FIBER

Natural charcoal infused fabric effectively absorbs unwanted odors, bacteria, and sweat to keep your shirt breathable *and high wicking*

### TECH



**YKK**

498

**MATERIALS:**

65% polyester / 35% cotton ripstop

**CADET CLASS C UNIFORM COATSLEEVES**

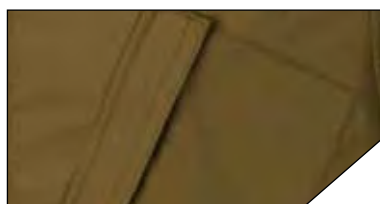
SKU: 101242

SIZE: XXXS - XXXL

OCP Uniform Coat is made to meet or exceed strict military standards for the ultimate protection. This coat is designed to withstand the daily operations of our military forces yet still has a professional appearance, while substantial upper-sleeve pockets provide plenty of storage and room for patch placement. This coat also features both reinforced elbows and military-grade stitching.

**FEATURES**

- Upper Sleeve pockets with YKK zipper closure
- Two Chest Pockets
- Front YKK Zipper Opening with hook & loop closure
- Name tape and patch capability
- Two-channel pen pocket
- Reinforced elbows



FRONT POCKET



FRONT ZIPPER

**YKK**

498

**MATERIALS:**

65% polyester / 35% cotton ripstop

**CADET CLASS C UNIFORM PANTS**

SKU: 101243

SIZE: XXXS - XXXL

Our OCP Uniform pants meet strict military standards. Developed on the battlefield through extensive surveys of our military personal, these trousers provide maximum concealment and protection in any environment. Durable, rip-resistant fabric military-grade stitching and reinforced knees extend the life of the garment.

**FEATURES**

- Two cargo pockets with button closure
- Two one-button closure lower leg pockets
- Reinforced knees
- Seven sturdy belt loops
- Traditional button fly



LEG POCKET



LOWER LEG POCKET



002

038

040

041

101260 DOES NOT HAVE 040

**MATERIALS:**

65% polyester / 35% twill

**CLASS B UNIFORM SHIRT**

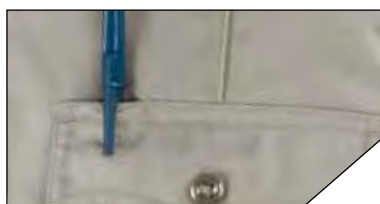
SKU:M:101259, F:101260

SIZE: M:S - 4XL, F: S - 2XL

Sharp looking and reliable. The Condor Outdoor Class B uniform shirt creates a professional look while maintaining comfort and durability. Military creases throughout keep the uniform crisp while Bar tacks and high-quality stitching keep it sturdy.

**FEATURES**

- Military creases - 2 on the front, 3 on the rear and 1 on each sleeve
- Hidden front zipper
- Two plain breast pockets with scalloped pockets.
- Pen slot included
- Separate Badge tab that can be sewn on
- Shoulder epaulets



PEN HOLDER



PIN TAB



002

041

**M:** Waist 30" - 46", inseam: 37" unhemmed  
**F:** Waist 4 - 20, Inseam: 35" unhemmed

**CLASS B UNIFORM PANTS**

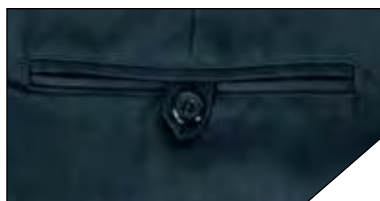
SKU:M:101261, F:101262

MATERIALS: 100% POLYESTER

Sharp looking and reliable. The Condor Outdoor Class B uniform pants creates a professional look while maintaining comfort and durability. Military creases throughout keep the uniform crisp while Bar tacks and high-quality stitching keep it sturdy.

**FEATURES**

- Slide adjustment waistband for additional comfort
- Lined 7/8" inserted belt loops
- Hook and eye closure
- Two front pockets and two back pockets for storage
- Bar tacks at stress points for durability



BACK POCKET



STRETCHABLE WAIST



002

041

Waist 2-18, Inseam: 30", 32"

## WOMEN'S PROTECTOR EMS PANTS

SKU: 101258

MATERIALS: 65% COTTON 32% POLYESTER 3% SPANDEX

Durable, comfortable and affordable, the Protector EMS pants are the perfect uniform pants for first responders. Equipped with 11 pockets, the Protector EMS Pants allow you to keep everything you need within reach. Rip-stop material prevents tearing while maintaining a lightweight feel and keeping a professional look.

### FEATURES

- Sliding waistband for additional comfort
  - 2 gadget pockets perfect for holding cell phones or other necessities
  - Interior knee pad pocket compatible with 221130 knee pad insert
  - thigh pocket with additional top zipper for extra storage.
- Also come with sheer holders.



LEG ZIPPER



STRETCHABLE WAIST



002

041

Waist 30" - 46", Inseam: 30", 32", 34"

## MEN'S PROTECTOR EMS PANTS

SKU: 101257

MATERIALS: 65% COTTON 32% POLYESTER 3% SPANDEX

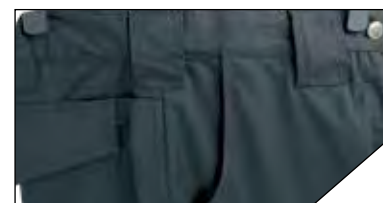
Durable, comfortable and affordable, the Protector EMS pants are the perfect uniform pants for first responders. Equipped with 11 pockets, the Protector EMS Pants allow you to keep everything you need within reach. Rip-stop material prevents tearing while maintaining a lightweight feel and keeping a professional look.

### FEATURES

- Sliding waistband for additional comfort
- 2 gadget pockets perfect for holding cell phones or other necessities
- Interior knee pad pocket compatible with 221130 knee pad insert



LEG ZIPPER



STRETCHABLE WAIST



YKK



## ODYSSEY PANTS GEN III

SKU:101254 Waist: 30" - 40", Inseam: 30", 32", 34"

The newly updated Gen III Odyssey pants now provides even better performance and durability. Constructed with a combination of stretchable rip-stop and 4-way stretch nylon fabric, the Gen III Odyssey enhances mobility without sacrificing comfort. When impact protection is needed, the redesigned knee pad pockets will accommodate our knee pad inserts.

### FEATURES

- Inlaid cargo pockets with zipper closure
- Two gadget pockets
- One coin pocket
- Articulated knee to maximize mobility
- Built-in knee pad pockets
- Water repellent and stain resistant finish
- Gusseted crotch for freedom of movement
- Elastic waistband



NATURAL  
STRETCH

001

002

006

028

029

#### MATERIALS:

63: Poly, 34% Cotton, and 3% Spandex 100% 4-way  
4-Way stretch panels: 93% Nylon and 7% Spandex



REINFORCED POCKET



LEG POCKET



MAG POCKET

800.552.2554 | CONDOROUTDOOR.COM

# PALADIN TACTICAL PANTS

SKU:101200



**MATERIALS** 63% POLYESTER / 34% COTTON / 3% SPANDEX RIP-STOP

**008 MATERIALS** 65% POLYESTER 35% COTTON RIP-STOP

The Condor PALADIN Tactical Pants features a Poly/Cotton/Spandex chassis, with strategically positioned 4-way stretch nylon panels to ensure freedom of movement. Multiple vent pockets provide optimal breathability and ventilation. This multi-fabric construction offers versatility and functionality with modern day aesthetics, and can be worn all-season within any terrain and climate conditions.

## FEATURES

- Two zippered vent pockets for air ventilation control
- Two hidden gadget pockets
- Two hand pockets with reinforced edge
- Two low profile cargo pockets with pleat for expansion
- Two back pockets with hook & loop flap closure
- Gusseted crotch for freedom of movement

**M:** WAIST 30" - 40", **INSEAM:** 30", 32", 34", 37" UNHEMMED



NATURAL  
STRETCH



MAG POCKET



KNEE PAD POCKET



STRETCH NYLON



001 OLIVE DRAB (00)



002 BLACK



006 NAVY



008 MULTICAM



YKK



001

002

004

006

018

030

**MATERIALS:**

63% polyester / 34% cotton / 3% spandex

**SENTINEL TACTICAL PANTS**

SKU: 608

LOOSE-FIT, WAIST: 30" - 44", INSEAM: 30", 32", 34"

The Condor Sentinel Tactical Pants are ripstop material to take the beating that you put it through while holding all the gear you need for the mission. Equipped with pockets for your gadgets, knife, tools, extra mags, and other utilities. The baggier fit works with the heavyweight fabric to disperse the weight of the pants and your gear, so you can move comfortably without the awkward drag.

**FEATURES**

- Stretchable ripstop material for maximum durability
- Self-adjusting waistband
- Two calf pocket with hook & loop closure
- Two knife/pen slots
- Two cargo pocket with hook & loop closure
- Internal knee pad pocket



CARGO POCKETS



REINFORCED POCKET

YKK



001

002

004

006

007

**MATERIALS:**

63% polyester / 34% cotton / 3% spandex

**STEALTH OPERATOR PANTS**

SKU: 610T

WAIST: 30" - 40", INSEAM: 30", 32", 34"

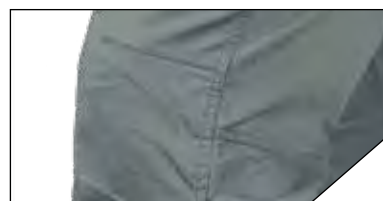
The Condor Stealth Operator Pants blend into the environment with no effort. Its lightweight construction of poly-cotton-spandex promotes mobility, moisture-wicking, and breathability while you're on the go. The Stealth has a straight cut that allows for more focused movement and more fluid utility of management. It is designed more for on-the-go essentials, rather than for a full load-out.

**FEATURES**

- Stretchable ripstop material for maximum durability
- Articulated knee construction to maximize mobility
- Deep back pockets with reinforced edges
- Inner knee pad pocket
- Gusseted crotch for freedom of movement
- Elastic waistband

NATURAL  
STRETCH

REINFORCED POCKET



ARTICULATED KNEE CONSTRUCTION

YKK



002

032

033

**MATERIALS:**  
97% cotton / 3% spandex

## CIPHER JEANS

SKU: 101137

WAIST: 30" - 40", INSEAM: 30", 32", 34"

Engineered with the urban operator in mind, the Condor Cipher jeans blend modern aesthetic with functionality. Constructed with 13 oz stretch denim to ensure 24/7 comfort, and a gusseted crotch for enhanced maneuverability. The Condor Cipher Jeans will maintain your cover in any covert mission.

### FEATURES

- Stretch fabric allows maximum movement & comfort
- Elastic waist band for IWB holster
- Two gadget pockets for phone or mag
- Two front pockets
- Two back pockets
- Gusseted crotch for freedom of movement



NATURAL  
STRETCH



RIVET REINFORCEMENT



MAG POCKET

YKK



002

004

028

029

**MATERIALS:**  
97% nylon / 3% spandex

## CIPHER PANTS

SKU: 101119

Waist: 30" - 40", Inseam: 30", 32", 34"

Engineered with the urban operator in mind, the Condor Cipher pants blend modern aesthetic with technical performance. Constructed with lightweight quick-drying stretch fabric to ensure 24/7 comfort, micro mesh pocket liner to boost breathability, and a gusseted crotch for enhanced maneuverability. The Condor Cipher balances performance and comfort for the challenges ahead.

### FEATURES

- Stretch fabric allows maximum movement and comfort
- Elastic waist band for IWB holster
- Two gadget pockets for phone or mag
- Zipper pocket on the right & two back pockets



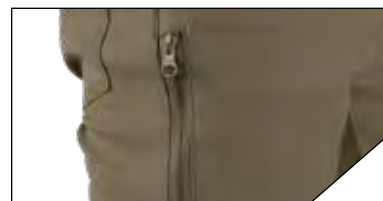
MOISTURE  
WICKING



NATURAL  
STRETCH



MAG POCKET



ZIPPER POCKET





002

029

**MATERIALS:**  
93% nylon / 7% spandex

## MAVERICK SHORTS

SKU: 101162

WAIST: 30" - 40", INSEAM: 10"

The Condor Maverick shorts are the classic chino shorts with a modern twist. Constructed with our durable 4-way stretch, moisture-wicking nylon/spandex fabric that keeps you cool and comfortable during the hottest days. Eight low profile pockets provide ample storage without sacrificing the clean line aesthetic.

### FEATURES

- 4-way stretch moisture-wicking fabric
- Elastic waist band for IWB holster
- Mesh pocket bag for ventilation
- Two hidden gadget pocket for phone or mag
- Two back welt pockets
- 10" inseam

NATURAL  
STRETCHMOISTURE  
WICKING

MAG POCKET



GUSSETED CROTCH



002

004

**MATERIALS:**  
63% polyester / 34% cotton / 3% spandex rip-stop

## SCOUT SHORTS

SKU: 101087

Waist: 30" - 40", Inseam: 11"

The Condor Scout is the answer to tactical shorts. Its streamlined aesthetic easily blends in with urban or outdoor settings, with ample pocket space to carry all the tools you need. The shorts are constructed with 8 oz poly/cotton blend ripstop fabric for superior durability.

### FEATURES

- Stretchable ripstop material for maximum durability
- Deep back pockets with hook & loop flap closure
- Right side zippered pocket with inner sleeve
- Slash hand pockets
- Reinforced pockets for tools
- 11" inseam

NATURAL  
STRETCH

DEEP BACK POCKETS



SIDE ZIPPER POCKETS



# ***TACTICAL VEST***



001

002

498

## VANQUISH RS PLATE CARRIER

SKU:201216

Small 34" - 42" adjustable, Large 44" - 50"

The Condor VANQUISH RS Plate Carrier is the newest addition to our VANQUISH ARMOR SYSTEM (VAS). Composed of a durable nylon construction, this new platform incorporates rapid open connectors allowing the user to quickly remove the carrier at any given moment in case of emergency. The Condor Vanquish RS is one of the most versatile and multi-function plate carrier on the market. Patented.

*Accepts Medium or Large Shooters/Swimmer/ESAPI plates up to 10" x 13"*

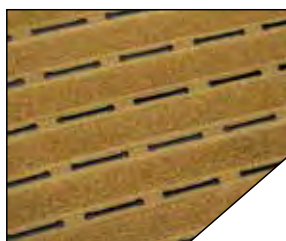
*Accepts Small 6" x 11" and Large 6" x 14" soft armor inside cummerbund*

### FEATURES

- Laser cut loop MOLLE panel
- Easy access plate pockets
- Low profile shoulder pads
- Adjustable shoulder straps and cummerbund
- Hook-and-Loop ID panels



RAPID OPEN CONNECTORS



LASER CUT MOLLE



SOFT ARMOR POCKET



PLATE POCKET



## LCS VANQUISH LT PLATE CARRIER

SKU: 201091

38" - 50" ADJUSTABLE

The VAS LT features a minimalist aesthetic and low profile design, comprised of high quality materials to accommodate your complete or light load-out options. Compatible with both hard and soft armor, this plate carrier is optimal for law enforcement and the private sector operation for its flush shape and fitment.

### FEATURES

- Hidden document pocket (compatible with VA6 mag insert)
- Adjustable shoulder straps
- Front and back 3"H x 8"W loop panel for ID patch
- Elastic cummerbund with built-in mag slots
- Compatible with all VAS accessories



002

498

ACCEPTS MEDIUM BALCS/SPEAR CUT SOFT  
ARMOR AND PLATES UP TO 10.5" X 13"



INSERT POCKET



ELASTIC CUMMERBUND

ADJUSTABLE SHOULDER  
STRAPS

## VANQUISH PLATE CARRIER

SKU: 201079

34" - 50" ADJUSTABLE

Condor Outdoor patented Vanquish Armor System or VAS, starts out in a minimalist low profile platform that can be worn under the jacket and can also be configured within minutes to meet any mission requirements or user preference with its versatile and adaptive platform. The VAS is packed with features and with the available add-on MOLLE equipment, the user can customize the Vanquish in their own way.

### FEATURES

- QD female buckle for mag panels (included)
- Adjustable shoulder straps
- Front/map/document pocket with hook & loop closure
- Adjustable waist strap with quick cinch adjustment
- Easy access plate pockets
- Emergency drag handle



001

002

498

800

Accepts Medium or Large  
Swimmer/ESAPI plates up to 10" x 13"



WAIST STRAP



DOCUMENT POCKET

ADJUSTABLE SHOULDER  
STRAPS



## RS CUMMERBUND RETRO KIT

SKU: 221239

SMALL/MEDIUM: 34" - 44"

- Rapid Open Connectors
- Shock-cord and cord lock included
- Cummerbund accepts soft armor panels
- Compatible with VAS side plate inserts (sold separately)

001

002

498



## VAS MODULAR CUMMERBUND

SKU: 221123

SMALL/MEDIUM: 34" - 42" LARGE/X-LARGE 44" - 52"

- Hook & loop front attachment point
- Shock-cord and cord lock included
- Cummerbund accommodates soft armor side panels
- Loop panel on interior of cummerbund for hook & loop attachments

001

002

498

800



## LCS VAS SLIM CUMMERBUND

SKU: 221122

SMALL/MEDIUM: 34" - 42" LARGE/X-LARGE 44" - 52"

- Condor proprietary LCS material with laser cut MOLLE slots
- Hook & loop front attachment point
- Shock-cord and cord lock included
- Loop panel on interior of cummerbund for hook & loop attachments

001

002

498



## LCS VAS MODULAR CUMMERBUND

SKU: 221153

SMALL/MEDIUM: 34" - 42" LARGE/X-LARGE 44" - 52"

- Condor proprietary LCS material with laser cut MOLLE slots
- Hook & loop front attachment point
- Cummerbund accommodates soft armor side panels
- Loop panel on interior of cummerbund for hook & loop attachments

001

002

498

**VAS M14 RECON MAG PANEL**

SKU: 221269 COMPATIBLE WITH MOST PISTOL

001 002 498

**VAS KANDAROO MAG PANEL (GEN II)**

SKU: 221270 COMPATIBLE WITH MOST PISTOL

001 002 498 800

**LCS VAS TRIPLE MAG PANEL**

SKU: 221152 HOLDS UP TO 3 AR/M4 OR AK MAGS

001 002 498

**ZIPPER STRIP**

SKU: 221125 9.5" OVERALL LENGTH

001 002 498

**M4 MAG INSERT**

SKU: VA6 HOLDS UP TO 3 AR/M4 MAGS

001 002 498

**VAS QD BUCKLES**

SKU: 221161 SIX PER PACK IN THE SAME COLOR

001 002 498

**VAS SIDE PLATE INSERT**

SKU: 221124 ACCOMMODATES 6"W X 8"H SIDE PLATES

001 002 498 800

COMPATIBLE WITH ENFORCER, EXO, MOPC CUMMERBUND

**MESH SHOULDER PAD**

SKU: 221226 COMPATIBLE WITH MOST PC WITH 1.5" - 2" STRAP

001 002 498

**SHOULDER PAD PC**

SKU: 221143 COMPATIBLE WITH MOST PC WITH 1.5" - 2" STRAP

001 002 498 800

**VAS WING POUCH**

SKU: 221154 ADJUSTABLE IN GIRTH AND HEIGHT TO ACCEPT A WIDE ARRAY OF ITEMS

- Adjustable and removable bungee retention
- Can be mounted behind the cummerbund or any loop surface

001 002 498







002

027

Accepts 10" x 12" Level III hard ballistic plates or Level III A shooters cut soft armor

## SPECTER PLATE CARRIER

SKU: 201214

34" - 48" ADJUSTABLE

The Condor SPECTER plate carrier is a low profile, lightweight carrier for discreet surveillance operations. Constructed of durable 4-way stretch nylon fabric for flush fitment while maintaining full range of motion. It can be worn as a minimal outer carrier in conjunction with up to level 3A Ballistic Plates, or concealed easily underneath a jacket while using most soft armor in the shooter cut configuration.

### FEATURES

- Heavy Duty nylon reinforcement at high wear areas
- Elastic cummerbund with integrated mag/radio/tourniquet holders
- 8" x 3" loop ID panels on front and back
- Optional kangaroo pocket (sold separately)



SPECTER KANGAROO POCKET  
221238



ELASTIC MAG HOLDERS



ELASTIC CUMMERBUND



002

027

498

Accepts Medium or Large Swimmer/ESAPI plates up to 10" x 13"

## PHALANX PLATE CARRIER

SKU: 201203

32" - 54" ADJUSTABLE

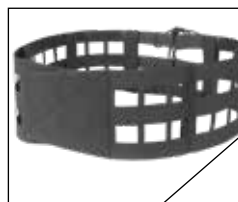
This modernized Condor Phalanx Plate Carrier was designed with the interests of the operator in mind. An LCS grid-styled cummerbund system runs around the carrier for better flexibility and ease of movement. This cummerbund is also compatible with a variety of attachments, including most Vanquish Armor Systems (VAS) accessory upgrades.

### FEATURES

- Front document pocket with hook & loop closure
- Adjustable shoulder straps
- Removable low profile padded shoulder pads
- LCS grid cummerbund
- Large loop ID panel on the front and back for ID or morale patches
- Easy access plate pockets



EASY SIZE ADJUSTABLE



LCS GRID CUMMERBUND



EMERGENCY DRAG HANDLE



TACTICAL VEST 042





002

498

008

021

Accepts Medium or large ESAPI plates up to 10" x 13" Accepts Medium 6" x 10" soft armor

## CYCLONE RS PLATE CARRIER

SKU: US1218

30" - 45" ADJUSTABLE

The Condor Cyclone RS Plate Carrier evolves from our original Cyclone design with modern day upgrades. Constructed of Mil-Spec 500D Cordura fabric, high tensile strength composite thread and nylon webbing throughout to ensure complete durability. This new platform incorporates rapid open connectors for instant donning and doffing when needed.

### FEATURES

- Constructed with Mil-Spec 500 denier Cordura® fabric
- Rapid open connectors allow for access/removal
- Adjustable cummerbund w/ soft armor pockets
- Condor side plate insert compatible (Sold separately)
- Easy access plate pocket
- Available in genuine MultiCam® and MultiCam BLACK®



RAPID OPEN CONNECTORS



PLATE POCKET

CUMMERBUND  
ADJUSTMENT

001

002

006

008

025

021

498

800

Accepts Medium or Large Swimmer/ESAPI plates up to 10" x 13" Cummerbund accepts soft armor inserts up to 6" x 11"

## MODULAR OPERATOR PLATE CARRIER (GEN II)

SKU: MOPC

40" - 48" ADJUSTABLE

The Condor Modular Operator Plate Carrier is designed for complete ballistic protection carrier. The padded adjustable shoulder straps and cummerbund ensure a true fit. This unique cummerbund features integrated soft armor pockets and it's compatible with our VAS side plate insert (sold separately). The MOPC by Condor Outdoor is ready to take on any fight.

### FEATURES

- Removable low profile shoulder pads
- Breathable 3D mesh liner
- Front map pocket with snap, hook and loop closure
- Easy access plate pockets
- Ballistic plates/soft armor not included
- Adjustable cummerbund with built-in soft armor pockets

*Gen2 cummerbund will only accept soft armor. It is side plate compatible With the integration of our #221124 side plate insert. (Sold separately)*

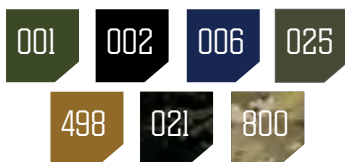


SOFT ARMOR POCKET



PLATE POCKET

CUMMERBUND  
ADJUSTMENT



Accepts Medium or large  
ESAPI plates up to 10" x 13"

## SENTRY PLATE CARRIER

SKU: 201042 32" - 54" ADJUSTABLE

The Condor Sentry Plate Carrier is the update of our classic Compact Plate Carrier. Designed to give the user a comfortable performance fit, and minimalistic feel, the Sentry is equipped with an emergency drag handle and quick cinch adjustments. Hook & loop adjusting shoulder straps provide comfort during rapid response situations.

### FEATURES

- Adjustable shoulder straps
- Emergency drag handle
- Hook & loop hydration/comm wire guides
- Padded mesh interior lining
- Easy access plate pockets
- Removable padded shoulder pads



PLATE POCKET ACCESS



ADJUSTABLE STRAPS



DRAG HANDLE



Accepts Medium or Large Swimmer/ESAPI  
plates up to 10" x 13"

## LCS SENTRY PLATE CARRIER

SKU: 201068 32" - 54" ADJUSTABLE

Employing the new Laser Cut System, the LCS Sentry is 30% lighter than its traditional MOLLE counterpart. With a more comfortable performance fit while holding standard plates, quick cinch adjustments, and hook & loop adjustments on the shoulders, the LCS Sentry is perfect for rapid response situations.

### FEATURES

- Laser cut platform for modular attachments
- Removable mesh shoulder pads, with hook & loop guides
- Adjustable shoulder straps
- Adjustable waist strap with quick release buckle
- Padded mesh interior lining
- Easy access plate pockets



LASER CUT SYSTEM



ADJUSTABLE STRAPS



QUICK RELEASE BUCKLES



## GUNNER PLATE CARRIER

SKU: 201039 40" - 50" ADJUSTABLE

The Condor Gunner Lightweight Plate Carrier is the minimized version of our classic Quick Release Plate Carrier. Smaller in size, but just as tough, the Gunner features a more comfortable fit while holding standard plates, and additional MOLLE attachments on the cummerbund for more utility.

### FEATURES

- Front map pocket with snap, hook & loop closure
- Emergency drag handle
- Padded mesh interior lining
- Adjustable cummerbund
- Easy access plate pockets

001

002

008

498

800

Accepts Medium or large ESAPI  
plates up to 10" x 13"



PLATE POCKET ACCESS



FRONT MAP POCKET



EMERGENCY DRAG HANDLE



## CYCLONE PLATE CARRIER

SKU: US1020 30" - 45" ADJUSTABLE

The U.S. made Condor Cyclone Plate Carrier is designed for first responders to carry plates. It also comes with padded shoulders and adjustable cummerbund for added comfort. Heavyweight MOLLE on the front and back along with hook & loop MOLLE provide lots of space on the vest for modular attachments and patches.

### FEATURES

- Constructed with Mil-Spec 500 denier Cordura® fabric
- Front map pocket with snap, hook & loop closure
- Adjustable cummerbund with soft armor pockets
- Easy access plate pocket
- Adjustable girth and height
- Available in genuine Crye-Precision™ MultiCam and MultiCam



002

008

021

498

Accepts Medium or Large Swimmer/ESAPI  
plates up to 10" x 13"



CUMMERBUND POCKET



FRONT MAP POCKET



EMERGENCY DRAG HANDLE



**S/M:** Accepts Medium BALCS/SPEAR cut soft armor, and plates up to 10" x 12.5" **L/XL:** Accepts Large BALCS/SPEAR cut soft armor, and plates up to 11" x 14" (Plate thickness should be less than 1/2 inch to fit)

## EXO PLATE CARRIER GEN II

SKU: 201165

S/M: 34" - 42" L/XL: 42" - 50"

The Condor EXO Plate Carrier is designed for maximum protection. Made to hold soft armor and plates, EXO will provide you the needed protection in dangerous environments. With its padded interior and shoulders for added comfort and articulation, you will be able to perform at your peak in the field.

### FEATURES

- Removable shoulder pads with hook & loop guides
- Front map pocket with snap, hook & loop closure
- Back auxiliary pocket with hook & loop closure
- Easy access plate pockets
- Adjustable cummerbund with soft armor pockets
- Adjustable shoulder straps



PLATE POCKET



SOFT ARMOR POCKET



DOCUMENT POUCH



**Accepts Large BALCS/SPEAR cut soft armor, and plates up to 11" x 14"**

## ENFORCER RELEASABLE PLATE CARRIER

SKU: 201147

40" - 50" ADJUSTABLE

The Condor Enforcer Plate Carrier is the updated version of its predecessor, the Condor QPC. Now it equipped with a front document pocket, updated cummerbund design, and more effective "Quick-Release" system. The quick release pull can be setup on either the left or right shoulder, and the carrier is designed to run both BALCS/SPEAR cut soft armor in conjunction with ESAPI plates for front and back protection.

### FEATURES

- Quick release pull tab
- Removable/Adjustable anti-slip padded shoulder pads
- Release pull adapts to left or right shoulder
- Padded mesh interior lining
- Easy access plate pockets
- Front map pocket with hook and loop closure



ARMOR POCKET



PLATE POCKET



RELEASE PULL TAB



## COMPACT PLATE CARRIER

SKU: CPC

40 - 54 ADJUSTABLE

The Condor Compact Plate Carrier is designed for high speed with low drag. It is comfortable and well-constructed with compression molded panels and heavy duty webbing for MOLLE compatible gear and accessories.

### FEATURES

- Side release buckles on shoulders and waist strap
- Compression molded panels
- Easy access plate pockets
- Emergency drag handle

Accepts Medium or Large Swimmer/ESAPI plates up to 10" x 13"

002

498



## DEFENDER PLATE CARRIER

SKU: DFPC

42" - 54" ADJUSTABLE

The Condor Defender Plate Carrier is one of our largest plate carriers and is designed for maximum protection. It can carry both soft armor and plates. The DFPC also features mesh padding for airflow and padded shoulders for added comfort.

### FEATURES

- Removable anti-slip padded shoulder pads
- Internal sleeves for soft armor
- Padded mesh interior lining
- Adjustable shoulder straps
- Emergency drag handle

Accepts Medium or Large Swimmer/ESAPI plates up to 10" x 13" & side plates up to 6" x 8", Accepts BALCS/SPEAR cut soft armor

001

002

498





001

002

498

## VAS HARNESS KIT

SKU: 201151

46" - 50" ADJUSTABLE

Designed for modern warfare, the VAS harness kit quickly converts our VAS front panels into a chest rig. Constructed with CONDOR proprietary LCS material for durability while maintaining a slim profile, this minimalist platform can be configured to meet the demands of different scenarios.

### FEATURES

- Designed to work with our VAS mag panels
- Fold-away sides to minimize profile
- Fully adjustable harness and waist strap
- Loop lined sides for hook accessories
- Laser cut slots for modular attachments
- Loop panel for ID patches



LOOP PANEL



INNER POCKET



VAS COMPATIBLE



001

002

498

## STOWAWAY CHEST RIG

SKU: 201236

30" - 48" ADJUSTABLE

The Condor Stowaway Chest Rig is one of our most versatile platforms yet. It can be used as a stand-alone rig or work in conjunction with our VAS line of plate carriers. Its front admin pouch provides ample room to store tools and accessories. A loop panel allows the user to apply patches or other hook backed attachments. Its defining feature is its reversible clam-shell design, which allows the rig to be folded into a compact pouch for easy storage.

### FEATURES

- Laser cut MOLLE panel
- Four point H harness
- Removable QD buckles
- Inner Zipper pocket
- Tethering webbing loops



BACK COVER

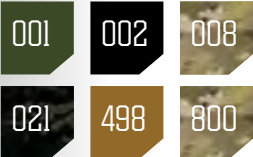


INNER ZIPPER POCKET



HOOK &amp; LOOP POCKET





## RECON CHEST RIG

SKU: MCR5

28" - 56" ADJUSTABLE

The Condor Recon Chest Rig is designed with built-in stacker/kangaroo style mag pouches to allow the user rapid, seamless access to mags for faster reloads with up to six AR/M4 mags and six pistol mags. The adjustable and removable flaps on the pistol pouches also allow the user to keep a knife, multi-tool, or other small accessories close at hand while training or on duty.

### FEATURES

- Padded cross-back shoulder strap with webbing
- Holds six AR/M4 mags & six pistol mags
- Swivi-Lockster - swivel quick release buckles
- Front pocket with hook & loop panel inside
- Compatible with Hydro Harness Integration Kit (242)
- Additional mesh pocket on interior



SWIVEL RELEASE BUCKLES



INTERIOR MESH POCKET



UP TO SIX AR/PISTOL MAGS



## RAPID ASSAULT CHEST RIG

SKU: MCR6

28" - 56" ADJUSTABLE

Strap on ample ammunition with the Condor Rapid Assault Chest Rig. With plenty of space for magazine storage and comfortable padding throughout the shoulders, it's a great choice for high-speed training scenarios and rapid response situations. The design provides immediate access to the six open-top M4 mag pouches, allowing for fast reloads when needed.

### FEATURES

- Padded cross-back shoulder strap with webbing and D-rings
- Swivi-Lockster - swivel push release buckles
- Six open-top AR/M4 mag pouches
- Front pocket pouch with hook & loop panel
- Additional mesh pocket on interior
- Compatible with Hydro Harness Integration Kit (242)



SWIVEL RELEASE BUCKLES



INTERIOR MESH POCKET



UP TO SIX AR/M4 MAGS



## MODULAR CHEST PANEL

SKU: MCR3 28" - 56" ADJUSTABLE

The Modular Chest Panel from Condor Outdoor offers plenty of impressive features for customization to suit any task. Use the extensive MOLLE loop panel and webbing to secure modular attachments. Switch them out between training sessions or missions to keep your most essential gear and supplies within reach.

### FEATURES

- Adjustable cross-back shoulder straps
- Swivi-Lockster - swivel push release buckles
- Front pocket pouch with hook & loop panel
- Grommets for drainage
- Compatible with Hydro Harness Integration Kit (242)

001

002

498



## OPS CHEST RIG

SKU: MCR4 28" - 56" ADJUSTABLE

Condor's Maxfort Long Sleeve Training Top is made to keep you pushing your limits. Treated poly fabric with moisture wicking, anti-microbial, and odor resistant finishes provides maximum comfort. The light compression of the shirt expels heat from your body, keeping you cool as you dominate your workout.

### FEATURES

- Padded cross-back shoulder strap with webbing & D-rings
- Swivi-Lockster - swivel push release buckles
- Front pocket pouch with hook & loop panel
- Two open top utility pocket (one on each side)
- Additional interior mesh pocket
- Compatible with Hydro Harness Integration Kit (242)

001

002

498

800



## RONIN CHEST RIG

SKU: MCR7 28" - 56" ADJUSTABLE

The Condor Ronin Chest Rig is the versatile gear you need for any task. It is designed with a quick-release buckle front opening and H-harness backing for rapid access. The fit can be adjusted to suit users with a wide range of girth and height, and the H-Harness is padded for extra comfort.

### FEATURES

- Swivi-Lockster - swivel push release buckles
- Padded H-harness with hook & loop
- Two mesh map pockets (one on each side)
- Adjustable shoulder & girth
- Compatible with Hydro Harness Integration Kit (242)

001

002

498

800



## MODULAR CHEST SET

SKU:CS

38" - 55" ADJUSTABLE

Get a versatile vest that can be used for a variety of tasks when you choose the Condor Modular Chest Set. With an adjustable and removable chest platform, this Condor modular vest features a particularly versatile design. One stand-out feature for this chest set is the built-in hydration carrier.

### FEATURES

- Six built-in AR/M4 mag pouches
- Padded shoulder straps
- Adjustable/removable chest platform
- Two internal mesh pockets
- Adjustable waist
- Built-in hydration carrier (bladder not included)

001

002

498

800



## HYDRO HARNESS INTEGRATION KIT

SKU: 242

ONE SIZE FITS MOST

Make sure you're ready for challenging outdoor excursions and missions with the Hydro Harness Integration Kit from Condor Outdoor. With its ergonomically contoured, padded shoulder straps, and breathable 3D mesh liner, it's especially comfortable to carry (even with a chest rig attached). This hydration carrier features MOLLE webbing, which allows the wearer to secure extra attachments.

### FEATURES

- Compatible with **MCR3, MCR4, MCR5, MCR6, and MCR7**
- Padded mesh interior lining
- Emergency drag handle
- Padded mesh shoulder straps with webbing
- Accepts up to 3.0L bladder (not included)

001

002

498

800



## H-HARNESS

SKU: 215

ONE SIZE FITS MOST

Choose the rugged H-Harness from Condor Outdoor to enjoy convenient access to additional gear and accessories when you're on the go. This unique harness is designed for use with the Battle Belt system. The suspender attachments securely hook into D-rings to provide stable support for the gear on your Battle Belt and help to distribute weight evenly across your torso.

### FEATURES

- Suspender adds support for the Battle Belt system (241, 121160)
- Contour shoulder harness with webbing on the back
- D-rings and webbing on the front for quick-access attachments
- Lightly padded mesh for air flow and comfort

001

002

498

800



## MODULAR CHEST PANEL

SKU: MCR1 28" - 56" ADJUSTABLE

The Modular Chest Rig is designed with a complete MOLLE platform to allow for modular attachments and personal customization. The padded shoulder straps and adjustable waist strap allow for a comfortable true fit. This chest panel is compatible with 10x12" ballistic plates, and features multiple attachment points for accessories.

### FEATURES

- Adjustable padded shoulder straps
- Adjustable and removable waist strap
- Accepts operator cut 10" x 12" plates
- Chest panel folds into inner pocket

001

002

498



## 7-POCKET CHEST SET

SKU: CR M - XL ADJUSTABLE

The Seven-Pocket Chest Rig from Condor Outdoor Products, Inc. is designed to deliver superior storage and organization where it matters the most. The chest rig is lightweight and easy to wear, with fully adjustable shoulder straps that conform to the shape of the wearer. The shoulder straps are also padded to help support the weight of the rig when fully loaded.

### FEATURES

- Holds up to six AR/M4 mags
- Two large utility pouches
- One internal map pocket
- Padded shoulder straps with utility pouch
- Adjustable shoulder straps
- Adjustable quick release waist belt

001

002

498



## MCR BIB INTEGRATION KIT

SKU: 221036 FITS MCR4, MCR5, MCR6

### FEATURES

- MOLLE webbing for modular attachments
- Thin foam padding
- Anti-slip back with rear admin pouch
- Hook & loop insert panel for secure installation
- PALS attachment
- Two 4" MOD straps included

001

002

498

800



## CROSS DRAW VEST

SKU: CV

M/L: UP TO 44" CHEST, XL/XXL UP TO 52" CHEST

### FEATURES

- Built-in shock absorbing shoulder padding
- Cross draw pistol holster
- Pistol tactical belt included
- Mesh back for ventilation
- Emergency drag handle

XL/XXL ONLY AVAILABLE IN COLOR BLACK (002)

002

498



## ELITE TACTICAL VEST

SKU: ETV

M/L: CHEST ADJUSTABLE UP TO 44"

### FEATURES

- Six adjustable AR/M4 mag pouches
- Two internal pockets
- Emergency drag handle
- Pistol belt included
- Mesh back for ventilation
- Built-in shock absorbing shoulder padding

001

002

498



## MODULAR VEST

SKU: MV

X - XL: CHEST ADJUSTABLE UP TO 46"

### FEATURES

- MOLLE webbing for modular attachments
- Padded back for comfort and airflow
- Padded chest with built-in shock stop
- Two internal zippered mesh pockets
- Belt loops to attach pistol or duty belt (belt not included)
- Emergency drag handle

001

002

498

PLATE CARRIER COMPARISON CHART

Note: Measure around novel + total thickness of armor.

PLATE CARRIERS	ESAPI SIZE	CUMMERBUND SIZE (MEASURE AROUND NAVEL)	SOFT ARMOR COMPATIBLE CUMMERBUND	VAS SIDE PLATE INSERT COMPATIBLE (SOLD SEP.)	BALCS/SPEAR SOFT ARMOR	HOOK & LOOP ID AREA	QUICK RELEASE	DOCUMENT POCKET	TUBE/WIRE GUIDES	DRAG HANDLE	ADJUSTABLE SHOULDER STRAP
201216 VANQUISH RS	10" x 13"	S: 34" - 42" L: 44" - 50"	6" x 10"	+		+	+		+	+	+
201091 LCS VANQUISH LT	10" x 13"	38" - 50"			M	+					+
201139 LCS VANQUISH	10" x 13"	34" - 50"	6" x 10"	+		+				+	+
201079 VANQUISH AS	10" x 13"	34" - 50"	6" x 10"	+		+			+	+	+
201214 SPECTER	10" x 13"	34" - 48"				+					+
201203 PHALANX	10" x 13"	32" - 54"				+		+	+	+	+
US1218 CYCLONE RS	10" x 13"	30" - 45"	6" x 10"	+		+	+			+	+
201042 SENTRY	10" x 13"	32" - 54"				+			+	+	+
201068 LCS SENTRY	10" x 13"	32" - 54"				+			+	+	+
US1020 CYCLONE	10" x 13"	30" - 45"	6" x 10"			+		+	+	+	+
MOPC MODULAR OPR	10" x 13"	40" - 48"	6" x 11"	+		+		+	+	+	+
201039 GUNNER	10" x 13"	40" - 50"				+	+	+	+	+	+
201165-S EXO GEN II	10" x 13"	34" - 42"	6" x 10"	+	M	+		+	+	+	+
201165-L EXO GEN II	11" x 14"	42" - 50"	6" x 12"	+	L	+		+	+	+	+
201147 ENFORCER	11" x 14"	40" - 50"	6" x 12"	+	L	+	+	+	+	+	+
CPC COMPACT	10" x 13"	40" - 54"				+				+	+
DFPC DEFENDER	10" x 13"	42" - 54"	6" x 8"		L	+		+	+	+	+

# ***BAGS & PACKS***

800.552.2554 | [CONDOROUTDOOR.COM](http://CONDOROUTDOOR.COM)



## PRIME PACK 21L

SKU: 111179 OVERALL DIMENSIONS: 18" X 12" X 6"

Simple. Understated. Not tactical. Practical. Featuring a tone-down aesthetic with just the right feature set to keep it mission capable. Leaning heavily on decades of experience, we filtered out all unnecessary features seen in other "tactical" bags and created the perfect daily carry or travel bag. Re-designed with feedback from the Marines and made exclusively for Cadets Corps, we took this classic form and updated it with everyday features. Now Condor has made this backpack available to the general public.

## FEATURES

- Clamshell design with dual zipper sliders for easy access
- Two inner zipper pockets
- PALS webbing for MOLLE attachments
- Exterior admin zipper pocket
- Front side access zippered pocket
- Contoured padded shoulder straps with sternum straps
- Hydration compatible (inside main compartment)
- Padded Laptop compartment (Fits up to 15" laptop)

002

498

021



HYDRATION COMPATIBLE



PADDED LAPTOP COMPARTMENT



EXTERIOR ADMIN ZIPPER POCKET



TWO INNER ZIPPER POCKETS



## COMPACT ASSAULT PACK GEN II

SKU: 111222 18"H x 9"W x 9"D VOLUME: 24L

The Condor Compact Assault Pack GEN II from Condor Outdoor Products, Inc. is designed to carry critical gear without breaking a sweat. The backpack is comfortable and lightweight, with multiple compartments inside and out to provide storage for just about anything you'll want to carry. Use the Compact Assault Pack to carry laptops, tablets, or other tech gear without worry.

### FEATURES

- Adjustable body contour shoulder straps
- Hook & loop panel for ID patches
- Compression straps
- Front quick access pocket
- Detachable waist belt
- Padded mesh back panel
- Grommets for drainage

001

002

498



FRONT COMPARTMENT



SHOULDER & STERNUM



SECONDARY COMPARTMENT



MAIN COMPARTMENT



AIR-FLOW  
SYSTEM



CONCEALED  
CARRY

## AERO ROLL-TOP PACK

SKU:111251 18"H - 24"H x 10"W x 6"D VOLUME: 20 - 25L

The Condor AERO backpack is engineered for urban or outdoor terrain ahead. Equipped with an expandable roll-top closure for flexible storage, and two zippered access points grants you access to your gear with ease and efficiency. Our signature air-flow panel provides excellent breathability and comfort, and the soft loop lining allows you to organize your gear with hook-backed accessories (not included).

## FEATURES

- Roll-top with zipper closure
- Quick side access with zipper closure
- Loop lining for hook backed accessories
- Adjustable shoulder strap
- Exterior zipper pocket
- Webbing loop attachment points

002



BOTTLE POCKET



LOOP LINED COMPARTMENT



AIR-FLOW BACK PANEL



ROLL-TOP WITH ZIPPER CLOSURE

AIR-FLOW  
SYSTEMCONCEALED  
CARRY

## PURSUIT PACK

SKU:111202 19"H x 12"W x 6.5"D VOLUME: 22L

This streamline designed multi-purpose pack developed by Condor Outdoor emphasizes a covert aesthetic with operational amenities. The freely designed pack allows for uttermost customization options to accommodate tactical EDC and EMT layouts, to drone pilot and photographer storage structures.

## FEATURES

- Clam-Shell design for easy access
- First of its kind gliding grab handle
- Configurable padded shoulder straps for multiple carry options
- Air-flow Back Panel improves ventilation
- Removable sternum strap
- Trolley handle pass through

002

027



LOOP LINED COMPARTMENT



FRONT COMPARTMENT



REMOVABLE SHOULDER STRAP



CONCEALED STRAPS

HYDRATION  
COMPATIBLE

## ORION ASSAULT PACK

SKU: 1111054 23"H x 13"W x 11"D VOLUME: 50L

The Condor ORION assault pack is a modular multi-mission pack that can be configured to specific mission requirements. The ORION integrated a versatile open-top storage space, ideal for odd shaped items such as helmet, rope, ponchos and etc. The detachable exterior compartment offers an additional 10 liters of storage, and can be converted to a backpack or sling pack.

## FEATURES

- Large main compartment with gear tie-down straps
- Detachable exterior compartment (18"H x 13"W x 3"D)
- Two detachable accessory pouches (8"H x 6"W x 3"D)
- Open-top quick access stash pocket
- Detachable rain cover with storage pocket
- Three reinforced grab handles
- Removable waist belt

002

498



SMALL PACK ORGANIZER



MAIN COMPARTMENT



ANTENNA PASS THROUGH



HYDRATION POCKET

HYDRATION  
COMPATIBLELAPTOP  
COMPATIBLECONCEALED  
CARRY

## VENTURE PACK

SKU:160

20"H x 12"W x 7"D VOLUME: 27.5L

This Condor backpack is designed for carrying technology and equipment into the field. Equipped with a laptop sleeve, multiple compartments for quick access and a bungee retentive stash pocket, the Venture can keep all of your devices organized. Use this bag when you need to keep all your gadgets ready to go in a moment's notice.

## FEATURES

- Padded back mesh panel for maximum airflow
- Detachable waist belt with molle webbing
- Sternum strap and side compression straps
- Padded laptop sleeve for 13"/15" laptops
- Interior mesh pockets
- Grommets on all compartments for drainage
- Hydration compatible

001

002

027

498

800



ORGANIZER POUCH



QUICK ACCESS ZIPPER



PADDED BACK SUPPORT



TECH POUCH



AIR-FLOW  
SYSTEM



HYDRATION  
COMPATIBLE



LAPTOP  
COMPATIBLE



CONCEALED  
CARRY

## ROVER PACK

SKU:111138 19"H X 11"W X 8"D VOLUME: 22L

The Condor Rover is a multi-role, multi-function pack whether you're backpacking for a trip to the mountains or just strolling along on the street. Equipped with the latest laser cut MOLLE panel for a more clean and modern aesthetic, combined with loop lined inner compartments that allow you to customize not only on the inside of the pack but the outer appearance as well.

## FEATURES

- Air-flow system to maximize ventilation
- Clam shell design with dual access points
- Laser cut panel for modular attachments
- Stretch woven side pockets
- Webbing loops for elastic cord tie down
- Compression straps & removable waist belt
- Laptop & 3.0L hydration compatible storage

002

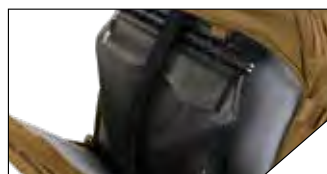
498



AIR-FLOW SYSTEM



LOOP PANEL (ACCESSORIES NOT INCLUDED)



HYDRATION COMPATIBLE



ORGANIZER PANEL

HYDRATION  
COMPATIBLELAPTOP  
COMPATIBLE

## URBAN GO PACK

SKU:147 18"H x 16"W x 10"D VOLUME: 33L

The Condor Urban Go Pack is designed with practicality in mind. With enough small pockets to fit everything without having to dig through a massive main compartment, but not so many that they are too small to carry the necessary gear. This everyday assault pack is for anyone, from students and outdoor enthusiasts to military professionals.

## FEATURES

- Padded laptop sleeve with zipper closure, sizes up to 15"
- Top front compartment with organizer panel
- Quick-access gadget pocket
- Main compartment with document sleeve, and mesh pocket
- Bottom front compartment with mesh pockets
- Two side pockets
- Grommets on all compartments for drainage

001

002

498

800



MAIN COMPARTMENT



BOTTOM POCKET



PADDED BACK AND BELT



SIDE POCKET



001

002

498

800

## 3 DAY ASSAULT PACK

SKU: 125

22"H x 17"W x 11"D VOLUME: 50L

The Condor 3 Day Assault Pack is the most popular pack in our line. Appreciated by operators, outdoors enthusiasts, and everyday users, it has proven itself time and time again in any situation. Its large cargo space, organization features, and utility make it the best choice in large packs.

### FEATURES

- Body contour shoulder straps with D-Ring for attachment
- Two double zipper pulls on the main compartment
- Individual foam pad back panel for extra comfort
- Heavy-duty carry and drag handle.
- Removable padded belt
- Grommets on all compartments for drainage
- Hydration compartment fits up to two 3.0L bladder

HYDRATION  
COMPATIBLE

HYDRATION COMPATIBLE



TIE DOWN STRAPS



ORGANIZER POCKETS



001

002

498

800

## COMPACT ASSAULT PACK

SKU: 126

18"H x 9"W x 9"D VOLUME: 24L

The Condor Compact Assault Pack has multiple compartments to provide storage for just about anything you'll want to carry, including compact laptops, tablets, or other tech gear. A built-in hydration pocket will house a 3.0L water bladder, and with its padded back and spacer mesh, you will find the Compact Assault Pack to be a comfortable fit during long treks or patrols.

### FEATURES

- Large compartment space for storing equipment
- Adjustable sternum and compression straps
- Padded back mesh panel for maximum airflow
- Contoured padded straps for comfort
- Adjustable waist belt
- Hydration compatible

HYDRATION  
COMPATIBLE

PADDED STRAPS



INTERIOR MESH POCKETS

ORGANIZER  
COMPARTMENT



## CONVOY OUTDOOR PACK

SKU: 169

18"H x 14"W x 9"D VOLUME: 22L

The Condor Convoy Outdoor Pack was designed with the thought that people would rise to the challenge to do more with less. So we took the [125] 3-Day Assault Pack, one of our best sellers, scaled it down and made it so that it would be functional enough to get you through whatever adventure you take it on.

### FEATURES

- Padded laptop sleeve
- Bottom front compartment contains mesh pockets
- Padded mesh backing for reinforcement and airflow
- Detachable waist belt
- Sternum strap & side compression straps
- Grommets on all compartments for drainage
- Hydration compatible



HYDRATION  
COMPATIBLE



LAPTOP  
COMPATIBLE

001

002

027

498

800



HYDRATION POCKET



ORGANIZER POCKETS



SIDE STORAGE POCKETS



## MEDIUM ASSAULT PACK

SKU: 129

19"H x 12"W x 9"D VOLUME: 30L

Whether out on a rigorous mission or on a weekend trip into the backcountry, the durable, double duty Condor Medium Assault Pack will keep you mobile. Its newly improved efficient design will allow operators quick access to their gear, making it an ideal choice.

### FEATURES

- External side compression straps
- Heavy-duty carry and drag handle
- Double zipper pulls on all compartments for easy access
- Compression molded back panel
- Removable padded waist belt



HYDRATION  
COMPATIBLE



CONCEALED  
CARRY

001

002

498



MOLDED BACK PANEL



HEAVY-DUTY HANDLE



HOOK & LOOP POCKET



002

498

## COMMUTER PACK

SKU: 155

17.5"H x 14"W x 6.5"D VOLUME: 26L

The multi-role Condor Commuter Pack serves a wide variety of environments from school campuses to security detail. The compartmentalized interior can accommodate a laptop or hydration bladder, along with a dedicated document sleeve with mesh pockets and a quick-access CCW pocket for when the time arises.

### FEATURES

- Padded, fleece lined laptop compartment fits up to 15"
- Main compartment with document sleeve & mesh pocket
- Zipper closure concealment pockets on the back
- Two side storage compartments for tools and equipment
- Sternum strap and multiple compression straps
- Detachable/adjustable waist strap
- Hydration compatible

LAPTOP  
COMPATIBLECONCEALED  
CARRYHYDRATION  
COMPATIBLE

HYDRATION POCKET



ORGANIZER POCKETS



SIDE STORAGE POCKETS



002

## AMBIDEXTROUS SLING BAG

SKU: 140

18"H x 13"W x 7"D VOLUME: 27L

Just like the name dictates, the Condor Ambidextrous Sling Bag allows user carry it on the dominant or support side. Regardless of which side it's on, the Sling Bag can be swung forward in one smooth & fluid motion for easy access to personal belongings including a quick access zipper for storing your CCW.

### FEATURES

- Ambidextrous shoulder/waist strap
- Two outer layers with multiple compartments and slots
- Concealment pockets with zipper closure
- Compression straps on top and sides
- Padded mesh back panel
- Double zipper pulls on all three compartments
- Hydration compatible pocket (Bladder not included)

CONCEALED  
CARRYHYDRATION  
COMPATIBLE

ORGANIZER POUCH



QUICK ACCESS ZIPPER

AMBIDEXTROUS  
SHOULDER



## FUEL HYDRATION PACK

SKU: 165

18"H x 14"W x 9"D VOLUME: 22L

Fuel your ambition and stay hydrated with the Fuel Hydration Pack from Condor Outdoor.

### FEATURES

- Main compartment with document sleeve
- Outer compartment with loop panel and sleeve
- Quick-access gadget pocket with fleece lining
- Padded back mesh panel for maximum airflow
- Detachable waist strap
- 3.0L (100oz) bladder Included



MOLLE/PALS  
COMPATIBLE



HYDRATION  
COMPATIBLE

001

002

498



TOP COMPARTMENT



HYDRATION COMPATIBLE



BOTTOM COMPARTMENT



## HYDRATION PACK

SKU: 124

17"H x 9"W x 3"D VOLUME: 8L

An ideal outdoor day pack that's lightweight and will keep you hydrated in challenging conditions.

### FEATURES

- Heavyweight webbing for modular attachments
- Two elastic mesh pockets in exterior pocket
- Body contoured shoulder straps with D-ring
- Padded back mesh panel for maximum airflow
- Detachable waist belt
- 3.0L (100oz) bladder Included



MOLLE/PALS  
COMPATIBLE



HYDRATION  
COMPATIBLE

001

002

498



MAIN COMPARTMENT



HYDRATION POUCH



FRONT COMPARTMENT



001

002

498

## LCS TIDEPOOL HYDRATION CARRIER

SKU: 111149

12"H x 8"W x 2"D

The new Condor LCS Tidepool, constructed with our proprietary LCS material with laser cut MOLLE slots resulting in an even more compact size than the original design. Wide zipper opening offers easy access to the reservoir and perfectly sized to eliminate overhang at the bottom of any plate carrier.

### FEATURES

- Condor proprietary LCS material with laser cut MOLLE slots
- Top zipper opening design for easy bladder access
- 7"W x 11"H exterior pocket with zipper closures
- 6.5"W x 2"H Loop panel for morale or ID patches
- Removable shoulder and sternum strap
- 1.5L (50 oz) bladder included



REMOVABLE STRAP



INTERIOR



MOLLE COMPATIBLE



001

002

498

800

## TIDEPOOL HYDRATION CARRIER

SKU: 111030

12"H x 7"W x 1.5"D

The Condor Tidepool's compact size is designed to go on your plate carrier without the overhang on the bottom, eliminating any uncomfortable shifting of your armor and providing a lower profile functional hydration carrier. Perfect for any vehicle driver and operators who prefer a more compact setup.

### FEATURES

- Clam shell design for easy access
- Exterior pocket with zipper closure
- Loop panel for morale or ID patches
- Removable shoulder and sternum straps
- 1.5L (50 oz) bladder Included EXCEPT SCORPION® color



PASS THROUGH



EXTERIOR POCKET



MOLLE COMPATIBLE



001 002 006 021 498 800

## HYDRATION CARRIER

SKU: HC/HCB 17"H x 8"W x 3"D

The Condor Hydration Carrier is a lightweight hydration carrier designed to carry a 3.0 liter bladder (included). It can be worn as a backpack or attached to a MOLLE compatible platform.

### FEATURES

- Heavyweight webbing for modular attachments
- Quick access flap with hook & loop ID panel
- Removable shoulder straps
- Sternum straps
- 3.0L (100pz) bladder included (800 not included)



001 002 498

## HYDRATION CARRIER 2

SKU: HCB2 15"H x 9"W x 3"D

Stay hydrated when you're enjoying outdoor activities or participating in any challenging mission with the Hydration Carrier 2 from Condor Outdoor. This updated version of the original hydration pack includes a number of notable features. The tactical bag comes with a 3-liter bladder (221219) to accommodate a plentiful water supply.

### FEATURES

- Two zipper compartments
- D-rings on straps
- Hook & loop ID panel
- Removable shoulder and sternum straps
- 3.0L (100oz) bladder Included



001 002 498

## OASIS HYDRATION CARRIER

SKU: HCB3 15.5"H x 8.5"W x 1"D

The Condor Oasis Hydration Carrier is our third generation hydration kit. It offers a low profile, compact carry for a 3.0 liters water bladder and features thermal insulation. The Oasis can be attached via Mod Straps or can standalone with its detachable shoulder straps.

### FEATURES

- Hook & loop webbing for ID patches
- Lined with thermal reflective material for insulation
- Detachable shoulder and sternum straps
- Includes two 6" and 4" MOD straps
- 3.0L (100oz) bladder Included



001

002

027

498

## CENTURION DUFFLE BAG

SKU: 111094

10"H x 22"W x 13"D VOLUME: 46L

The Condor Centurion duffel bag is the scaled down version of the Condor Colossus Duffel. This medium sized duffel can be used as a carry-on for short getaway trips or organized storage for all your supplies and equipment.

### FEATURES

- Large main compartment with U-shaped opening
- Hide-away padded backpack straps
- Reinforced textured PVC bottom
- Separated boot compartment
- Inner mesh organizer in main compartment
- Vinyl ID window



MAIN COMPARTMENT



REINFORCED BOTTOM



BOOTS COMPARTMENT

## COLOSSUS DUFFLE BAG

SKU: 161

10"H x 27"W x 14"D VOLUME: 60L

The Condor Colossus is our improved take on the traditional soldier duffel bag. By compartmentalizing a traditional duffel, we've made it easier to separate, store, and carry your gear no matter what the situation. The compartments also expand into one another to give you more room for bigger items and decompress to have a greater volume. The Colossus is a versatile bag for any situation.

### FEATURES

- Large storage compartment with expandable divider
- Three external zipper side sleeves
- Hide-away padded backpack straps
- Reinforced textured PVC bottom
- Vinyl window
- Detachable shoulder strap
- Separated storage space



001

002

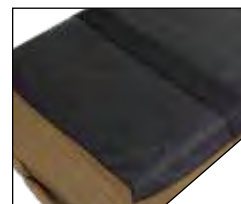
498



SEPARATED STORAGE



LARGE COMPARTMENT



REINFORCED BOTTOM



021

027

498

800

## KIT BAG

SKU: 111146

4.5"H x 11"W x 4.5"D

The Condor Kit Bag is a versatile multipurpose bag designed to carry anything from tools, travel supplies, or even range gear.

### FEATURES

- Hook & Loop ID strip
- Grab Handle
- Nylon loop for attachments



ID TAG



INTERIOR



BACK SIDE

## E&E BAG

SKU: 157

10.4"H x 12"W x 4" VOLUME: 9L

The Condor E&E Bag is compact, versatile and highly customizable. Whether it's going to the range, everyday commute, or traveling. A removable front flap for discretion in urban environments, elastic loops for attachments, and spacious main compartment for storage, this bag is versatile enough for whatever your day requires.

### FEATURES

- Internal radio pouch with antenna access
- Main compartment with removable divider
- Removable waist strap with SLIK clip
- Removable flap with clear vinyl inner layer
- Padded back pocket with loop panel
- Multiple elastic loops



002

CONCEALED  
CARRY

MAIN COMPARTMENT



REMOVABLE FLAP



CONCEALMENT POCKET



002

027

498

## AVIATOR BAG

SKU: 111163

13"H x 18"W x 4"D VOLUME: 15L

The Condor Aviator bag takes cue from iconic military helmet bag and scaled it down for everyday use practicality. Built with rugged fabric to withstand daily wear & tear and made with water repellent material for all weather use. Ample storage compartments and pockets to accommodate your laptop, documents, and accessories.

### FEATURES

- Water repellent material for all weather use
- Two large exterior pockets with hook & loop closure
- Large loop area for ID or morale patches
- Removable shoulder strap and shoulder pad
- Large zipper pocket in the back
- Luggage handle pass-through
- Zippered main compartment with internal pockets



HANDLE PASS-THROUGH



INTERIOR POCKETS



HOOK

## BRIEF CASE

SKU: 153

13"H x 47"W x 3.5"D

The Condor Briefcase is designed for you to take your work on the go. Equipped with a plethora of pockets, the briefcase has enough organization to keep all the essentials within reach. Removable side pouches provide even more versatile carry options.

### FEATURES

- Water bottle pouch with hook & loop flap
- Detachable/adjustable padded shoulder strap
- Reinforced wrap around carrying handle with padded grip
- Concealment pocket with loop panel for hook attachments
- Padded GPS pouch with front pocket
- Open flat with adjustable tether straps
- Open padded sleeve, fits up to 17" laptop


LAPTOP  
COMPATIBLE

CONCEALED  
CARRY


002



LAPTOP SLEEVE



CONCEALMENT POCKET



MAIN COMPARTMENT



## DRAW DOWN WAIST PACK GEN III

SKU: 111292 7"H x 10"W x 2.5"D VOLUME: 2.5L

The updated Gen III Draw Down Waist Pack features a sleeker design and increased storage capacity in a more streamline profile. Perfect as a standalone fanny pack or attached seamlessly beneath compatible plate carriers. The narrower width allows the Draw Down to sit perfectly under standard plates without restricting movement during dynamic situations. This covert support pack offers space for everyday essentials or tactical items. The loop lined main compartment accommodates hooked backed accessories such as holsters, mag pouches, and admin organizers.

## FEATURES

- Redesigned to optimize capacity while maintaining a compact size
- Wider zipper opening allows easier access
- Interchangeable belt system
- Can be used as a fanny pack or mounted to plate carrier
- Loop lined interior for hook backing accessories
- Rear zipper pocket for valuable personal items

001

002

498



PLATE CARRIER MOUNT



BACK SIDE



INTERIOR



WAIST BELT



001

002

498

## TACTICAL RESPONSE BAG

SKU: 136

9.5"H x 13"W x 4"D VOLUME: 8L

The Condor Tactical Response Bag is a great way to get organized for any emergency preparedness situation. Having a great amount of divided pre-divided compartments gives you a quick way to fit your essentials. It comes with a concealed universal pistol holster in a hidden hook and loop compartment.

### FEATURES

- Main compartment with removable divider
- Two adjustable side pockets
- Hook & loop panel front pocket for concealment weapon
- Padded removable shoulder strap
- Four accessory pockets with hook & loop closures
- One tactical flashlight pocket

CONCEALED  
CARRY

001

002

498

## EDC BAG

SKU: 156

10"H x 9"W x 4.5"D

Safely store important essentials for any trip or mission with the Condor EDC Bag. This Everyday Carry (EDC) bag features plenty of space to keep supplies safely stored and close at hand. It's a lightweight tactical bag that can be easily attached and adjusted using a waist strap and shoulder strap.

### FEATURES

- Double zippered main compartment with internal sleeves
- Front compartment with elastic loops and internal sleeves
- Webbing on both side for modular attachments
- Concealment pocket with hook & loop panel
- Adjustable shoulder strap with side-release buckle
- Secret compartment located behind outer compartment

CONCEALED  
CARRY

001

002

498

## UTILITY SHOULDER BAG

SKU: 137

8"H x 12"W x 4.5"D VOLUME:

The Utility Shoulder Bag from Condor Outdoor Products, Inc. offers comfort and efficiency in one neat package. The shoulder bag is medium in size and features plenty of built-in organization to keep gear within easy reach. The large main compartment has a zipper closure for added security and three internal pockets keep small objects within arm's reach.

### FEATURES

- Zipper closure main compartment
- Three internal pockets
- Modular attachment straps
- Removable shoulder strap



001

002

010

498

800

## DEPLOYMENT BAG

SKU: 127

6"H x 12"W x 5.5"D VOLUME 6.5L

### FEATURES

- Four compartments
- Buckled compression straps
- Adjustable & removable shoulder strap
- Web carrying handle
- Two 6" modular straps included



002

## FANNY PACK

SKU: 143

ONE SIZE FITS MOST

### FEATURES

- Center compartment with hook & loop panel
- Two side pockets
- Tug-away layer on both side pockets
- Padded mesh backing
- Ambidextrous with two quick access pulls
- Universal Holster (UH1) included



001

002

498

## FOLD OUT MEDICAL BAG

SKU: MA20

9"H x 10"W x 5"D

### FEATURES

- Three fold-out compartments with zippered closure
- Adjustable straps
- Web carrying handle
- Modular attachment strap



## 27" DISPATCH TAKE DOWN CASE

SKU: 111186

12"H x 28"W x 3.5"D

Inspired by the original Transporter, the DISPATCH incorporated even more functional features to the interior and gave it a more sportier aesthetic. With the DISPATCH, you can discreetly carry & transport your firearm without drawing unnecessary attention.

### FEATURES

- Fits broken-down AR, short barreled rifles and AK underfolders
- Padded main compartment with removable padded divider
- Four removable tight down straps to secure weapon
- Loop lined exterior compartment
- Padded back with mesh reinforcement to maximize airflow
- Hide away shoulder strap
- Main compartment with lockable zipper

002

006

027



## 25" TRANSPORTER CASE

SKU: 164

8.5"H x 26"W x 4"D

The Condor Transporter's discreet design hides your AR-15 Carbine in plain sight. The exterior zipper compartment holds your magazines, tools, and other accessories. Also, fits AR and AK pistols as well as AK-47 underfolders and other take-down guns.

### FEATURES

- Discreet take down designed to fit AR-15 carbine
- Main compartment with lockable zipper
- Padded main compartment with removable padded divider
- Four tie-down straps to secure weapon in place
- Large exterior zipper compartment with elastic loops for mag
- Hide-away shoulder strap

002





## JAVELIN 36" RIFLE CASE

SKU: 111046 11.5"H x 38"W x 4.5"D

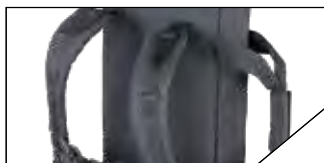
The CONDOR Javelin 36-Inch Rifle Case is a modernized weapon case designed to blend into an urban setting. The case boasts a roomy interior that can comfortably hold one rifle up to 36 inches in overall length. The expandable main compartment provides additional storage space for your kit.

### FEATURES

- Accommodate rifle up to 36" overall length
- Loop lined main compartment for hook backing attachments
- Expandable main compartment for additional storage
- Four removable tie-down straps for securing weapon in place
- Two exterior zipper compartments with fleece lining
- Removable shoulder strap

002

027



SHOULDER STRAPS



EXPANDABLE COMPARTMENT



LOOP LINED MAIN COMPARTMENT



PISTOL POUCH



## 36" / 42" SINGLE RIFLE CASE

SKU:133/128

133: 13"H x 37"W x 3"D, 128: 13"H x 43"W x 3"D

001

002

498

### DESCRIPTION

The Condor Rifle Case is fully padded for maximum protection with an additional 26" front compartment for pistols, optics, SMGs, or other accessories. It comes with three modular pouches that hold up to 14 AR/M4 magazines.

### FEATURES

- Accommodates up to one 36" / 42" rifle respectively
- Two hook & loop straps to secure rifle
- Removable/ detachable shoulder strap
- 26" external compartment with two internal pockets
- Three modular exterior pouches
- .75" internal padding



## 36" / 42" / 46" DOUBLE RIFLE CASE

SKU:151/152/159

151: 13"H X 37"W X 3.5"D, 152: 13"H X 43"W X 3.5"D, 159: 13"H X 47"W X 3.5"D

001

002

498

### DESCRIPTION

The Condor Double Rifle Cases are designed to carry two primary weapons, with the addition 26" compartment for pistols, optics, SMGs or other accessories. It comes with three modular pouches that hold up to 14 AR/M4 magazines. The padded divider separates the two rifles, and the entire case is fully padded for maximum protection.

151 only comes in Black or Coyote Brown. 159 only comes in Black.

### FEATURES

- accommodates up to two 36"/42"/46" rifle respectively
- Four hook & loop straps to secure rifle
- 26" external compartment with two internal pockets
- Hide away/detachable padded backpack strap
- Removable padded center divider
- Three modular exterior pouches
- .75" internal padding



## 52" SNIPER DRAG BAG

SKU:111107

11"H X 52"W X 5"D

001

498

### DESCRIPTION

The Condor Sniper Drag Bag is the solution for snipers who have to carry and prepare a variety of gear for their missions. Equipped with storage pockets inside and outside, the Sniper Drag Bag is ready to carry mats, veils, magazines, cleaning kits, and documents to the field and back.

### FEATURES

- Four interior weapon-securing quick-release straps
- Three exterior storage pouches
- One interior accessory pouch
- Removable padded center divider
- Detachable shoulder straps with sternum straps



## SHOTGUN SCABBARD

SKU:148

29" LONG

001

002

498

800

### DESCRIPTION

The Condor Shotgun Scabbard is there when you need a safe way to carry your shotgun. Designed for shotguns with 18.5" to 20" barrel, this multifunctional padded scabbard protects your shotgun while carrying through the woods or to the range. The Shotgun Scabbard can be mounted on backpack or LBE vest.

### FEATURES

- Shoulder carry or modular mount system
- Webbing on both sides for ambidextrous usage
- Four D-ring locations for attaching shoulder sling
- Detachable tension strap with side-release



001

002

498

## 28" RIFLE CASE

SKU: 150

13"H x 29"W x 3"D

The Condor 28" Rifle Case is designed for easy carrying for an array of firearms. Designed for SBR, MP5 or AK with folding stock, its fully padded main compartment and lockable zippers keep your firearm safe and secure.

### FEATURES

- 28" weapon compartment with two hook & loop straps
- 18" secondary compartment with padded hook & loop panel
- Dual zipper access
- Padded interior
- Shoulder strap and grab handle



002

## 38" RIFLE CASE

SKU: 158

10"H x 38"W x 3"D

The Condor 38" Rifle Case provides a clean and simple way to store your rifle that is also comfortable to carry. Equipped with both a shoulder strap and ergonomic padded handle, and pouches for your accessories, this rifle case makes it easy to take your firearms where you need.

### FEATURES

- Utility compartment with loop panel for attachments
- Zipper pocket for accessories
- 0.75" Interior foam padding
- Adjustable/detachable shoulder strap



001

002

498

## PISTOL CASE

SKU: 149

10"H x 12"W x 2.5"D

The Condor Pistol Case is durable, lockable, and fully padded to protect your firearm. The clam shell zipper opening for quick and easy access to contents and loop lined interior allows you to customize your storage layout for your handgun, magazines and other accessories.

### FEATURES

- .25" padding with lockable zipper
- Padded center divider to protect equipment
- Wrap around webbing carry handle
- Document pocket on the back
- One 4" x 5" utility pouch
- Elastic keeper to hold tools or magazines
- One Universal Holster
- Multi-tool pouch with elastic band and adjustable flap



## LCS PISTOL CASE

SKU: 111264 10"H x 12"W x 3.5"D

The Condor LCS pistol case is an evolved design of our original pistol case. The front is equipped with a laser cut molle panel that is made of our proprietary LCS material, enabling you to add attachments as needed. The interior is well-padded throughout for maximum protection from bumps and drops. The redesigned elastic holders will hold most pistol mags or tools with a similar profile.

## FEATURES

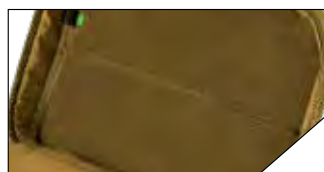
- Can carry up to two pistols
- Loop lined main compartment for any hook & loop attachments
- Removable tie-down straps for securing weapon in place
- Main compartment with lockable zipper
- Inner zipper pocket

002

498



INTERIOR COMPARTMENT



LOOP LINED COMPARTMENT



LOCKABLE ZIPPER



BACKSIDE



# MODULAR POUCHES



## DIP POUCH

SKU: 191208

DIMENSIONS: 3.5" X 3.5" X 1"

### FEATURES

- Hold standard size tobacco dip can or similar sized items
- One NARCAN and disposable gloves
- Dual zipper compartment for easy access
- Multiple carry options: MOLLE, Belt, Carabiner
- LCS MOLLE Slots double as lashing point for pen or sunglasses
- One 4" MOD strap included
- Stretchable inner sleeve for various small items, such as keys, flash drive, disposable gloves, ID/credit card and etc

001

002

498



## NARCAN POUCH

SKU: 191296

42" - 54" ADJUSTABLE

### FEATURES

- Proprietary LCS material
- Front pouch can be sized to fit one or two NARCAN nasal spray
- Open top design for easy access
- Bungee retention to secure contents
- MOLLE compatible
- Two 4" MOD straps are included

001

002

006

498





001

002

498

## MICRO TK POUCH GEN II

SKU:191297 SIZE: 4"H X 6"W X 2"D

The newly improved Gen 2 Micro TK Pouch was redesigned based on feedback from first responders who used it in real-world situations. The Gen 2 TK Pouch incorporates a laser-cut cross insignia, which utilizes color or reflective inserts for easy and positive identification as an IFAK during emergency.

### FEATURES

- Compact and Lightweight
- Laser cut quick access tabs on both sides
- Inner carrier with elastic loops
- Laser cut slit on backside of inner carrier to secure shear (loop not included)
- Adjustable outer carrier
- Laser cut cross insignia with sleeve for Hi-Vis or reflective insert
- Exterior elastic loops for tourniquet, chemlights or sharpie

MOLLE/PALS  
COMPATIBLE

INSERT



SHEAR HOLDER



ELASTIC LOOPS



## RIP AWAY EMT POUCH

SKU:MA41 8"H X 6"W X 3.5"D UP TO 52"

- Tri-fold design with multiple pockets and elastic loops for storage
- Multiple pockets and elastic loops for storage
- Addition 2" webbing, with pull-tab for quick closing
- Two inch patch area across front of pouch
- Wide handle for carrying or rapid removal

001 002 006 008 010 498 800



## FIRST RESPONSE POUCH

SKU:191028 4.5"H X 6.5"W X 2"D

- Rip way hook back with loop panel
- Back webbing allows horizontal or vertical mounting
- One pocket, elastic securement straps
- Quick close flap with hook & loop support

001 002 498 800



## EMT POUCH

SKU:MA21 7"H X 5"W X 2.5"D

- Clam-shell design
- Elastic Dividers
- Large main compartment with dual zipper sliders
- MOLLE compatible

001 002 008 010 498 800

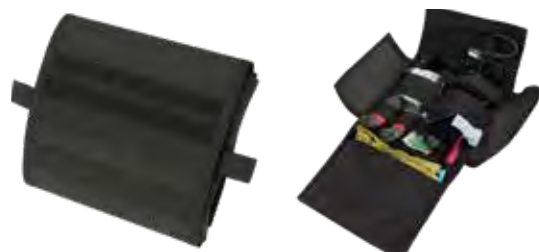


## RIP AWAY EMT LITE POUCH

SKU:191031 6.5"H x 4"W x 2"D

- Rip way hook back with loop panel
- Clam-shell design with multiple pockets and elastic loops for storage
- Internal quick open pull tab
- 6" MOD straps included

001 002 006 008 010 021 025 027 498 800



## RIP AWAY IFAK POUCH

SKU:191053 8"H X 8.5"W X 1"D

- Quick deployment open fold design
- Multiple pockets and elastic loops for storage
- Hook & loop webbing panel for identification
- Wide handle for carrying or rapid removal

002



## UNIVERSAL TQ POUCH

SKU:191112 7.5"H X 3.5"W X 3"D

- Hook & loop flap closure
- Elastic fastener secure with hook & loop
- Can be mounted HORIZONTALLY or VERTICALLY
- MOLLE compatible

001 002 006 025 498 800



## RDS HOLSTER

SKU:191278 8"H X 3.5"W X 1.5"D

The CONDOR RDS holster is designed specifically for pistols with red dot sight. This holster is reinforced with a stiffener for added structure, and shape retaining for ease of reholstering. The wrap-around design allows custom sizing and retention over the pistol, adjustable thumb break for added security.

### FEATURES

- Accommodate most full-size pistols with optic sights as well as lasers or flashlights
- Adjustable width and height
- Adjustable/removable thumb break
- Mount vertically on MOLLE platform

002

498



BREAK COVER



TETHER



WRAP-AROUND DESIGN



THUMB BREAK

**PISTOL POUCH**

SKU: MA10 8.5"H X 4"W X 1.5"D

- Mount VERTICALLY on MOLLE platform
- Hook and loop flap closure
- X26 Taser compatible

001 002 498 800

**GLOCK AMBIDEXTROUS HOLSTER**

SKU: H-GLOCK 8"H x 4.25"W x 1.5"D

- Fits a Glock or similar pistols
- Retention system with secondary elastic cord to secure weapon
- One pistol mag pouch included

001 002 498

**HT HOLSTER**

SKU: MA68 8"H X 4.25"W X 1.5"D

- Mount HORIZONTALLY on MOLLE platform
- Wrap-around design to fit pistols with laser or flashlight attached

001 002 498 800

**BERETTA AMBIDEXTROUS HOLSTER**

SKU: H-BERETTA 8"H x 4.25"W x 1.5"D

- Fits a Beretta or similar pistols
- Retention system with secondary elastic cord to secure weapon
- One pistol mag pouch included

001 002 498

**VT MAG HOLSTER**

SKU: MA69/191267 8"H X 3.75"W X 1.5"D

- Mount VERTICALLY on MOLLE platform
- Wrap-around design to fit pistols with laser or flashlight attached
- 191267 - 800 not available

001 002 498 800

**1911 AMBIDEXTROUS HOLSTER**

SKU: H-1911 8"H X 4.25"W X 1.5"D

- Fits a 1911 or similar pistols
- Retention system with secondary elastic cord to secure weapon
- One pistol mag pouch included

0001 002 498



## KANGAROO MAG POUCH (GEN II)

191233 TRIPLE 191232 DOUBLE 191231 SINGLE



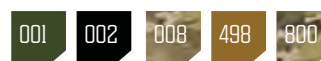
FITS UP TO 3 AR/M4 MAGS & 3 PISTOL MAGS

Only 191232 is available in 006 / Only 191232 & 191233 are available in 021  
Only 191233 is available in 008



## STACKER M4 OPEN-TOP MAG POUCH

MA42 SINGLE MA43 DOUBLE MA44 TRIPLE



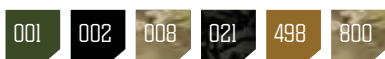
ONLY MA44 IS AVAILABLE IN 008

Fits up to six AR/M4 mags



## M4 OPEN-TOP MAG POUCH

MA18 SINGLE MA19 DOUBLE MA27 TRIPLE



FITS UP TO THREE AR/M4 MAGS  
Only MA27 is available in 008 & 021



## M4 MAG POUCH

MA5 SINGLE MA4 DOUBLE MA58 TRIPLE



FITS UP TO THREE AR/M4 MAGS  
Only MA5 is available in 006 & 008



## M4 BUTTSTOCK MAG POUCH

SKU: MA59 FITS 1X AR/M4 MAG

- Fits both fix stock or collapsible M4/M16 stock
- Hook backing attaches to any loop surface
- Adjustable flap





### M14 OPEN-TOP MAG POUCH

SKU:MA24

FITS UP TO TWO M14 MAGS



### M14 MAG POUCH (GEN II)

191088 SINGLE

191089 DOUBLE



FITS UP TO FOUR M14 MAGS



### M14 KANGAROO MAG POUCH

SKU:191040

2 M14 MAGS & 2 PISTOL



### AK KANGAROO MAG POUCH

MA71 DOUBLE

MA72 TRIPLE



FITS UP TO THREE AK MAGS & THREE PISTOL MAGS



### AK/AR MAG POUCH

MA6 DOUBLE

MA33 TRIPLE



FITS UP TO NINE AR MAGS OR SIX AK MAGS



### SINGLE OPEN-TOP G36 MAG POUCH

SKU# 191129

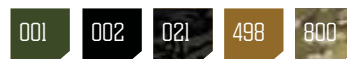
5"H X 3"W X 1.5"D



### UNIVERSAL RIFLE MAG POUCH

SKU# 191128

7"H X 3.5"W X 2"D





### PISTOL MAG POUCH

MA32 SINGLE    MA23 DOUBLE    MA52 TRIPLE



FITS UP TO THREE PISTOL MAGS

Only MA23 is available in 025, 027 / Only MA23 & MA32 are available in 006, 008, 021 /  
Only MA52 is available in 025



### TRIPLE MP5 MAG POUCH

SKU # MA37    FITS UP TO THREE MP5



### P90 & UMP45 MAG POUCH

SKU # MA31    FITS ONE P90 OR UMP45 MAG



### FLASHBANG POUCH

191062 SINGLE    191063 DOUBLE



### DOUBLE 40MM GRENADE POUCH

SKU # MA13    6"H X 4.5"W X 2"D



### FRAG GRENADE POUCH

MA14 DOUBLE    MA15 SINGLE



**HANDCUFF POUCH****SKU: MA47****1.25" D.**

- Fits both fix stock or collapsible M4/M16 stock
- Hook backing attaches to any loop surface
- Adjustable flap

001

002

006

498

**FLASHLIGHT POUCH****SKU: MA48****3.5" D.**

- Internal cloth over grommet for low light capability
- Hook and loop strap to secure light
- Multiple carrying options: MOLLE, Belt, Carabiner

001

002

006

498

800

**TECH SHEATH PLUS****SKU: 191085****5.5"H x 3"W x 1"D**

- Hook and Loop cover flap
- Rear Slick Clip for attachment
- Two Hook and Loop attachment straps

001

002

498

800

**UNIVERSAL RIFLE MAG POUCH****SKU: 191029****FITS UP TO 26" EXPANDABLE BATON**

- Opening for deployed batons
- One 6" MOD strap included
- MOLLE compatible

001

002

006

498

**EMT GLOVE POUCH****SKU: MA49****4"H X 3.5"W X .75"D**

001

002

006

498

**OC POUCH****SKU: MA78****4.5"H X 2"W X 2"D**

001

002

006

025

498

**4X4 UTILITY POUCH****SKU: MA77****4"H X 4"W X 2"D**

001

002

006

498



**ADMIN POUCH**

SKU:MA30

7"H X 7"W

001

002

498



**MAP POUCH**

SKU:MA35

7"H X 6"W X 2"D

001

002

008

498

800



**ID POUCH**

SKU:MA39

4"H X 5"W

001

002

498



**T&T POUCH**

SKU:MA54

7.5"H X 11"W X 1.5"D

001

002

008

498

800



**SIDE-KICK POUCH**

SKU:MA64

7"H X 5.5"W X 1.5"D

001

002

006

008

021

027

498

800



**ANNEX ADMIN POUCH**

SKU:191086

5.5"H X 7"W X 1.5"D

001

002

498

800



## TECH POUCH

SKU:191287 8.5"W X 5"H X 2.5"D

A place for everything and everything in its place. Our stackable packable tech pouch effortlessly transforms into a sling or fanny pack. Featuring tons of compartments and elastic straps to organize cables, chargers, battery packs, and all of your tech electronics. This city-friendly go-bag boasts thoughtfully sized pockets and sleeves, perfect for your documents, credit cards, and cash.

## FEATURES

- Designed to keep all your tech accessories in one place
- Front exterior zipper pocket for frequent access items
- Rear zippered document pocket
- Webbing across the front as clip points for add-on

002

021

027



MULTIPLE STRETCH POCKETS



ELASTIC LOOPS FOR PEN



INTERNAL ZIPPERED SLEEVE



ONE QUICK-CINCH STRAP



### AMMO POUCH

SKU: MA2 7"H X 6.5"W X 3"D

001 002 498 800



### 3 FOLD MAG RECOVERY POUCH

SKU: MA22 4"H X 10"W FOLDED

001 002 008 498 800



### ROLL-UP UTILITY POUCH

SKU: MA36 5"H X 4.5"W FOLDED

001 002 008 498 800



### UTILITY POUCH

SKU: MA8 4.5"H X 8.5"W X 3.5"D

001 002 008 498 800



### GAS MASK POUCH

SKU: MA11 10.5"H X 6.75"W X 4"D X 2"D

001 002 498



### POCKET POUCH

SKU: MA16 7.25"H X 5"W X 1.5"D

001 002 498



### GADGET POUCH

SKU: MA26 5.5"H X 4"W X 2.5"D

001 002 006 008 498 800



### I POUCH

SKU: MA45 5"H X 3"W X 1.5"D

001 002 498 800



### LARGE UTILITY POUCH

SKU: MA53 8"H X 8"W X 2.5"D

001 002 498



### GPS POUCH

SKU: MA57 8.5"H X 3.5"W X 1.25"D

001 002 498



### BELT TQ POUCH FOR RAT TOURNIQUET

SKU: 191193 5"H X 2"W

002 498



### DIGI POUCH

SKU: MA66 3.5"H X 5.5"W X 2.5"D

001 002 027 498 800

**G.P. POUCH**

SKU: MA67 6.25"H x 7.25"W x 1.5"D

001 002 025 498 800

**H2O POUCH**

SKU: MA40 10"H x 5"D

001 002 008 027 498 800

**SIDE PLATE POUCH**

SKU: MA75 8"H x 8.5"W x 1"D

001 002 498 800

**TECH SHEATH**

SKU: MA73 3"H x 5"W x 1"D

001 002 498

**SMALL UTILITY POUCH**

SKU: 191044 8"H x 8.75"W

001 002 498

**WATER BOTTLE POUCH**

SKU: 191045 8"H x 4"W x 3"D

001 002 498

**BINOCULAR POUCH**

SKU: 191064 6"H x 6"W x 3"D

001 002

**COMPACT UTILITY POUCH**

SKU: 191178 4"H x 6.5"W x 1.8"D

001 002 021 025 498 800

**HHR POUCH**

SKU: MA56 4"H x 2"W x 1.5"D

001 002 498 800



001 002 025 498

**MICRO DUMP POUCH**

SKU: 191172 4"H x 3.75"W FOLDED

- Holds eight 30rd .223/5.56 NATO STANAG magazines
- Can also be used for shotgun shells or other magazines
- Mesh bottom for drainage
- Folds into a compact size
- 10" wide opening with elastic cinch cord and flap
- Multiple attachment options, two 4" Mod Straps included



## FIELD POUCH

SKU: 191215 10"H X 3.5"W X 3.5"D

The CONDOR Field pouch can be used in a stand-alone orientation or attached to any MOLLE platform. The convenient all-around zipper design provides easy access and deep storage of contents. Keep everything in one place for complete lightweight travel.

### FEATURES

- Will accommodate bottles up to 40 oz
- Laser cut MOLLE slots for modular attachments
- MOLLE compatible (MOD strap not included)
- D-ring for shoulder strap (sold separately)

001

002

498



## PATROL RADIO POUCH GEN II

SKU: 191229 6.5"H X 3"W X 1.75"D

The Condor Patrol Radio Pouch is a simple-to-use pouch that is designed to carry radios for Law Enforcement. The Patrol Radio Pouch can accommodate most types of public safety handheld radios and walkie talkies measuring up to 6.5-7.5" H x 2.375" W x 1.625" D thanks to a four-inch pocket height.

### FEATURES

- Will accommodate most public safety hand held radio
- Open top design with bungee cord secure magazine
- Elastic Sides to accommodate wider radios
- MOLLE compatible

001

002

025

006

498



## PHONE POUCH

SKU: 191224 6.5"H X 3.5"W X 1"D

Keep your phone handy and within reach with a high-quality tactical Phone Pouch from Condor Outdoor Products, Inc. Designed to fit most makes and models of cell phones, the exterior elastic sleeve will even accommodate plus-sized phones, while the zipper closure compartment securely stores small personal accessories.

### FEATURES

- Exterior elastic phone sleeve with flap closure
- Two pen loops for organization
- Main compartment with zipper closure
- MOLLE compatible for attachment
- Two 6" MOD straps included

001

002

498



## THE TACTICAL SHOTGUN RELOAD SYSTEM

The Shotgun Reload System (TSRS) allows an operator to carry more ammo than other shotgun shell extension systems. The Tactical Shotgun Reload Platform features a detachable 6-round magazine strip that is the same size as the standard 30-round A.R. magazines, allowing an operator to carry the strips on their tactical vest to increase their ammo capacity. In conjunction with the Reload Platform, The Tactical Shotgun Reload Buttcuff platform allows the operator to mount the buttcuff to most shotgun stocks and making reloads quicker at the operators reach. The shotshell strip is part of the system designed to attach to the buttcuff or modular platform for quicker reloading of your firearm. The TSRS also allows an operator to use the same mag pouches designed for A.R. mags and insert additional 6-round magazine strips.

VELCRO® is a registered trademark of Velcro IP Holdings LLC. Used with permission



### TSRS SHOTSHELL PLATFORM

SKU: US1023 6.5"H X 3.5"W

- Carries 6 shotgun shells
- Shotshell strip with VELCRO® Brand backing
- Modular platform with VELCRO® Brand loop panel
- Requires 6" Mod straps (NOT INCLUDED)

002



### TSRS BUTTSTOCK SHELL PLATFORM

SKU: US1024 6.5"H X 2"W

- Carries 6 shotgun shells
- Detachable magazine strip with VELCRO® Brand fasteners
- Tri-glide buckles with adjustable straps
- Fits most shotgun stocks

002



### TSRS SHOTSHELL STRIP

SKU: US1025 6.5"H X 2"W

- Carries 6 shotgun shells
- VELCRO® Brand fasteners backside for easy attachment
- Able to mount to any loop surface

002



### SHOTGUN AMMO POUCH

SKU: MA12 3.5"H X 7.25"W X 1.75"D

- Fits 12 shotgun shells
- Hook & loop flap closure with panel
- 4 modular attachment straps on the back

001

002

498



### SHOTGUN RELOAD POUCH

SKU: MA61 8"H X 4"W X 1.5"D

- Fits up to 25 shotgun shells
- Adjustable flap with snap closure
- MOLLE compatible

001

002

025

498



**SHERIFF  
RESCUE**

# ***TACTICAL GLOVES***



## STRYKER PADDED KNUCKLE GLOVES

SKU: 226

8(S), 9(M), 10(L), 11(XL), 12(XXL)

### FEATURES

- Synthetic leather palm with padding
- 2-way stretch spandex backhand for flexibility
- Hook & loop cuff closure with molded rubber tab
- Silicone anti-slip finger tips to maximize grip
- High-density padded knuckle helps absorb shock from impact

001

002

003



## SHOOTER GLOVES

SKU: 228

8(S), 9(M), 10(L), 11(XL), 12(XXL)

### FEATURES

- Synthetic leather palm with reinforced padding
- 2-way stretch spandex backhand for flexibility
- Hook & loop cuff closure with molded rubber tab
- Silicone anti-slip finger tips to maximize grip
- Terry cloth sweat wipe on thumb

002

003

007





# ***TACTICAL BELT***

800.552.2554 | [CONDOROUTDOOR.COM](http://CONDOROUTDOOR.COM)



## HYBRID EDC BELT

SKU: US1288

This American-made EDC belt is designed to be a combination of durability and functionality. Thanks to its unique blend of materials and parts, it manages to offer a balance of stiffness and comfort for everyday wear. The high-quality construction ensures it won't easily tear or wear



### FEATURES

- Genuine AustriAlpin 1" Cobra® buckle
- Double layer 1.5" nylon webbing
- Resin treated belt ends to provide durability
- Three rows of stitching to increase belt stiffness

### SIZES

- S/M: 48" Long - Suggested waist size 30"-34", adjustable length 32"-36"
- M/L: 54" Long - Suggested waist size 36"-40", adjustable length 37"-41"
- L/XL: 60" Long - Suggested waist size 42"-46", adjustable length 42"-46"

002

003

## PDQ MAGNETIC BELT

SKU: 121299

Pretty Damn Quick (PDQ) magnetic buckle paired with our proprietary 20% stretch webbing delivers the most comfortable everyday wear with the perfect stiffness for your everyday carry.



### FEATURES

- Proprietary rigid webbing with 3% stretch
- Elastic belt keeper
- Flexible size adjustment
- 1.5" webbing
- Flat magnetic buckle

002

027



## LCS VECTOR BELT

SKU: 121304

### FEATURES

- Self-securing magnetic buckle
- 2" wide belt webbing throughout
- Laser cut slots for modular attachment
- Reinforced with scuba webbing
- Removable inner anti-slip pad
- Can be used as two belt system

### SIZES

- X-Small/Small: 28.5" - 32.5" belt length, Waist size 26"-28"
- Small/Medium: 34.5" - 38.5" belt length, Waist size 30"-32"
- Medium/Large: 40.5" - 44.5" belt length, Waist size 34"-36"
- Large/X-Large: 46.5" - 50.5" belt length, Waist size 38"-40"

001

002

498



## LCS GUN BELT

SKU: 121174/121175

### FEATURES

- 121174: QD Buckle / 121175: Cobra® Buckle
- 2" wide belt webbing throughout
- Laser cut slots for modular attachment
- Reinforced with scuba webbing
- Removable inner anti-slip pad
- Can be used as two belt system

### SIZES

- XS: 28.5 - 32.5" Length, 26"- 28"
- S: 34.5 - 38.5" Length, 30"- 32"
- M: 40.5" - 44.5" Length, 34"- 36"
- L: 46.5" - 50.5" Length, 38"- 40"
- XL: 52.5 - 56.5" Length, 42"- 44"

001

002

008

498





## INNER BELT

SKU:121247

### FEATURES

- 1.5"W webbing
- Low-profile hook surface

### SIZES

- S/M: 42" Long
- L/XL: 52" Long



002

## BELT ANTI-SLIP PAD

SKU:121302

### FEATURES

- 121174: QD Buckle / 121175: Cobra® Buckle
- 2" wide belt webbing throughout
- Laser cut slots for modular attachment
- Reinforced with scuba webbing
- Removable inner anti-slip pad
- Can be used as two belt system

### SIZES

- XS 27"
- S 32.5"
- M 38.75"
- L 45"
- XL 51.5"



CAN BE USED AS TWO BELT SYSTEM

002



## SLIM BATTLE BELT

SKU: 121160

001

002

021

498

800

### FEATURES

- Slim design to prevent over fold
- Side panels with hook & loop closure
- Three removable anti-slip pads
- Two leg rig attachment openings
- Two rows of webbing across belt
- Four D-rings attachment points

### SIZES

S: 35.5" Length, 30"- 34"  
M: 39" Length, 36"- 40"  
L: 42" Length, 42"- 46"



## BATTLE BELT GEN II

SKU: 241

001

002

498

800

### FEATURES

- Fits 1.5" - 2" web belt
- Contoured shape to aid mobility
- Side panels with hook & loop closure
- Two rows of webbing across belt
- Four D-rings for harness
- Two leg rig attachment openings
- Padded mesh lining

### SIZES

S: 35.5" Length, 30"- 34"  
M: 39" Length, 36"- 40"  
L: 42" Length, 42"- 46"



## COBRA PRO BELT

SKU: US1268

002

### FEATURES

- Genuine COBRA® Pro-Style buckles by AUSTRIALPIN™
- Reinforced with two layers of 1.75" nylon webbing
- D-Ring COBRA® meets ANSI and CSA standards
- Five rows of stitching to increase belt stiffness
- Loop lined to use in conjunction with inner belt or



### SIZES

S: 42" Length, 30"- 34"  
M: 48" Length, 36"- 40"  
L: 54" Length, 42"- 46"



## COBRA TACTICAL BELT

SKU: US1056

002

003

499

### FEATURES

- AustriAlpin 1.75" Cobra® buckle
- 1.75" wide webbing
- Resin treated belt ends
- Five rows of stitching for rigidity



### SIZES

S: 42" Length, 30"- 34"  
M: 48" Length, 36"- 40"  
L: 54" Length, 42"- 46"



## TACTICAL BELT

SKU: TB

001

002

008

498

800

### FEATURES

- 2" wide with quick release buckle
- Two detachable pistol mag pouches
- Loop lined interior

### SIZES

Adjustable up to 44" waist



**INSTRUCTOR'S BELT**

SKU: IB

001

002

003

**FEATURES**

- 1.75" resin treated nylon webbing
- Forged steel buckle (2000lbs tensile strength)
- Five rows of stitching for rigidity

**SIZES**

S: 48" Length, 30"- 34"  
 M: 54" Length, 36"- 40"  
 L: 60" Length, 42"- 46"

**RIGGER'S BELT**

SKU: RB

001

002

003

499

800

**FEATURES**

- 1.75" nylon webbing (7000lbs tensile strength)
- Forged steel buckle (2000lbs tensile strength)

**SIZES**

S: 42" Length, 24"- 32"  
 M: 49" Length, 34"- 40"  
 L: 59" Length, 42"- 48"

**BDU BELT**

SKU: 240

001

002

003

499

**FEATURES**

- 1.5" wide Nylon webbing
- Non-metallic buckle

**SIZES**

S/M: 35.5" Length, 30"- 34"  
 M/L: 39" Length, 36"- 40"  
 L/XL: 42" Length, 42"- 46"

**COBRA GUN BELT**

SKU: US1019

002

008

498

499

**FEATURES**

- Genuine AustriAlpin 1" Cobra™ buckle
- 1.75" wide webbing
- Exterior 1" webbing with 3" loop
- Double layer heavy duty webbing
- Accepts holster with belt or paddle system battle belt

**SIZES**

S: 42" Length, 30"- 34"

M: 48" Length, 36"- 40"

L: 54" Length, 42"- 46"

**GT COBRA GUN BELT**

SKU: US1078

002

003

499

**FEATURES**

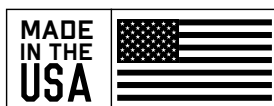
- ITW Nexus GT Cobra® buckle
- 1.5" nylon webbing
- Three rows of stitching
- Hook & loop secure belt end battle belt

**SIZES**

S: 42" Length, 30"- 34"

M: 48" Length, 36"- 40"

L: 54" Length, 42"- 46"

**G.I. STYLE PISTOL BELT**

SKU: PB

001

002

498

**FEATURES**

- 2.25" width with quick release buckle
- Metal eyelets

**SIZES**

Adjustable up to 44" waist



## EDC BELT

SKU: 121285

002 027

• S/M: 26" – 40" ADJUSTABLE LENGTH • L/XL: 31" – 50" ADJUSTABLE LENGTH

Conceal carry in style with Condor EDC belt. The web belt is constructed with our proprietary material that is rigid, lightweight, and stretchable. The anodized aluminum alloy buckle will hold up to the weight of your gear and the belt can be easily adjusted to the desired length for a perfect fit. This sleek belt design is a perfect match to any office

### FEATURES

- Hard anodized aluminum alloy buckle
- Quick slide release
- Proprietary rigid webbing with 3% stretch
- Elastic belt keeper
- Flexible size adjustment
- 1.5" webbing

800.552.2554 | [CONDOROUTDOOR.COM](http://CONDOROUTDOOR.COM)

# LEG RIGS

800.552.2554 | [CONDOROUTDOOR.COM](http://CONDOROUTDOOR.COM)



001

002

498

## GAS MASK LEG RIG

SKU: 171275

18"H X 14"W X 9"D

### FEATURES

- Ambidextrous design to meet user's preference
- Sized to fit popular tactical gas masks
- Hook and loop closure with quick release buckle
- Fully adjustable leg strap with quick release buckle
- MOLLE compatible (Two mod straps are required, sold separately)



INTERIOR COMPARTMENT



MOLLE COMPATIBLE



REMOVEABLE STRAP



001

002

498

## EMT LEG RIG

SKU: 171192

FULLY ADJUSTABLE

Keep supplies within easy reach with an EMT Leg Rig from Condor Outdoor Products, Inc. The EMT Leg Rig is designed to be worn on the rig and has three built-in pouches to keep the most critical items an EMT carries organized and within easy reach. Comfortable to wear and fully adjustable in design, the EMT leg pouch boasts an adjustable, non-slip padded drop leg platform and heavy-duty construction.

### FEATURES

- Non-Slip padded drop leg platform
- Fully adjustable leg strap with quick release buckle
- Comes with three detachable pouches:
  - 1 x Open top utility pouch for radio or CAT tourniquet. (belt mount)
  - 1 x Rip-away EMT Lite Pouch for medical items
  - 1 x Small utility pouch with flap for pistol mag, flashlight, or multi-tool (Belt mount)



BACK



PLATFORM



MODULAR POUCHES



## TORNADO TACTICAL LEG HOLSTER

SKU: TTLH/171170 (LEFT HAND)

FULLY ADJUSTABLE

Keep your sidearm securely stored with the Condor Tornado Leg Holster. This tactical leg holster is fully adjustable, allowing it to accommodate a wide range of weapon sizes, including everything from a standard sidearm to a sidearm with a laser or light attachment. Simply use the retention system with a built-in hook and loop strap to secure your weapon.

### FEATURES

- Wrap-around design to fit pistols with laser
- Retention system with additional hook & loop strap
- Fully adjustable leg strap with non-slip rubber lining
- One magazine pouch, with adjustable hook & loop flap
- Will fit medium or large size pistol

800 only available in TTLH



## TACTICAL LEG HOLSTER

SKU: TLH

FULLY ADJUSTABLE

### FEATURES

- Retention system with additional hook & loop
- Adjustable Hook & loop strap to secure weapon
- One pouch with adjustable hook & loop flap
- Leg straps feature anti-slip rubber stitching
- Double 1.25" adjustable webbing leg straps with buckles
- Fits most medium to large sized pistols



## UNIVERSAL LEG HOLSTER

SKU: ULH

FULLY ADJUSTABLE

### FEATURES

- Detachable padded holster (belt mount)
- Quick release buckle retention
- Fully adjustable leg strap with non-slip rubber lining
- 1x Build-in pistol mag pouch with adjustable flap



001

002

498

## DROP LEG PANEL

SKU: 171037

9.5"W x 7"H

### FEATURES

- Low profile design
- Hook & loop adjusted belt mount
- D-Ring swivel mount for motion contour
- Anti-slip backing on panel and leg strap
- Quick release adjustment for leg strap



001

002

498

800

## DROP LEG M4 MAG POUCH

SKU: MA65

FULLY ADJUSTABLE

### FEATURES

- Adjustable leg strap with anti-slip rubber lining and quick release buckle
- Quick detachment without removing belt
- Adjustable flap with quick release buckles
- Side webbing for modular attachments
- Fits 2x M4 Mags per pocket



001

002

498

800

## DROP LEG PLATFORM

SKU: MA1

10"H x 9"W

### FEATURES

- Five rows of MOLLE webbing
- Quick release belt attachment allows rapid detachment
- Double 1.5' adjustable webbing leg rig straps with buckle
- Leg straps feature anti-slippage rubber stitching



001

002

498

800

## DROP LEG DUMP POUCH

SKU: MA38

7.5"H X 7"W X 3"D

Keep essential supplies close at hand with the Condor Drop Leg Dump Pouch. This handy bag can be used to store a wide variety of important tools and accessories. Use your Condor dump pouch to stash your empty magazines or other equipment quickly.

### FEATURES

- Hook & Loop flap closure
- Top access opening to allow quick drop
- Side webbing for modular attachments
- Fully adjustable leg strap with no-slip rubber lining and buckle



002

## CROSS OVER LEG RIG

SKU: 219

6"H X 11"W X 5"D

The Condor Cross Over Leg Rig is the ideal rig to use on the leg or on the waist. With attached pouches, organization comes with ease. Adjustable straps help and ensure the rig stays in its place when the end user needs it most.

### FEATURES

- Main compartment with 420D packcloth and drawstring closure
- Side release buckle flap, with zipper pocket over center pouch
- Additional mesh compartment on the back with zipper closure
- Front pocket with zipper closure
- Two side utility pouches
- Single waist/shoulder strap for dual usage



001

002

498

## UTILITY LEG RIG

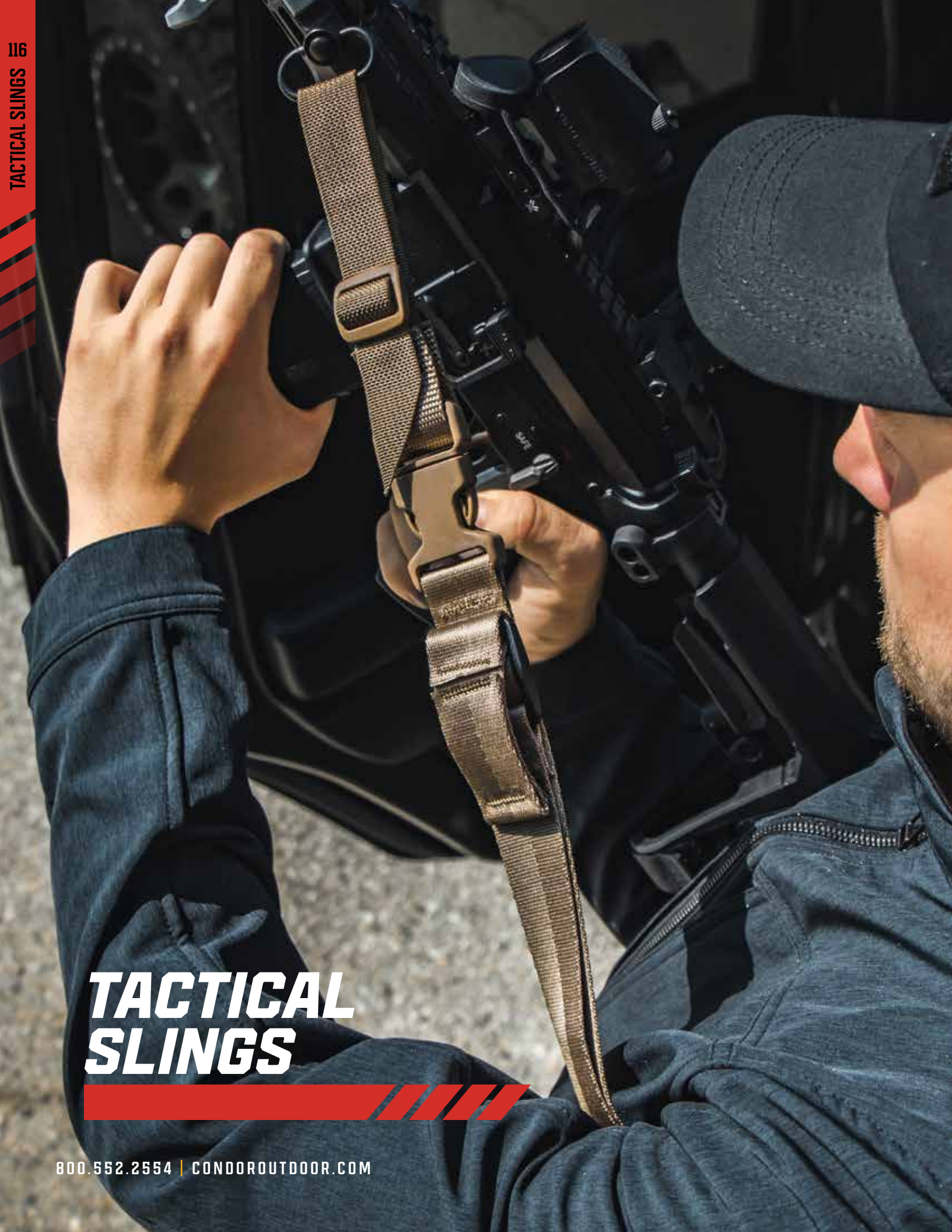
SKU: MA25

FULLY ADJUSTABLE

The Condor Utility Leg Rig is a customizable drop leg platform that includes 3 detachable gear pouches. A great choice for day hike, search & rescue or inspection works.

### FEATURES

- Non-slip padded drop leg platform
- Fully adjustable leg strap with quick release buckle
- Comes with three detachable pouches:
  - 1 x Radio pouch. (belt mount)
  - 1 x Gadget pouch for electronics
  - 1 x Flashlight pouch. (Belt mount)



# TACTICAL SLINGS



## STRYKE SINGLE BUNGEE CONVERSION SLING

SKU: US1009

ONE SIZE FITS MOST

- Converts from two point to single point sling
- Transition-lock with pull-tab for quick adjustments
- Single bungee construction
- HK snap hook adapter covered with elastic tube
- Side-release buckle to release adapter
- 1.25" webbing with Duraflex® heavy-duty buckles



001

002

008

498



## COBRA SINGLE POINT BUNGEE SLING

SKU: US1001

ONE SIZE FITS MOST

- Single point sling
- Dual bungee construction
- HK snap hook adapter covered with elastic tube
- Side-release buckle to release adapter
- 1.25" webbing with Duraflex® heavy-duty buckles



001

002

008

498



## SWIFTLINK PADDED BUNGEE SLING

SKU: 211181

ONE SIZE FITS MOST

- 3/8" foam padding covered by 2" Tubular Webbing
- Converts from two point to single point sling
- Single bungee construction
- HK snap hook adapter covered with elastic tube
- Side-release buckle to release adapter and sling
- 1.25" webbing with Duraflex® heavy-duty buckles

002

498



## MATRIX PADDED SINGLE POINT SLING

SKU: 211182

ONE SIZE FITS MOST

- 3/8" foam padding covered by 2" Tubular Webbing
- Single point sling
- Dual bungee construction
- HK snap hook adapter covered with elastic tube
- Side-release buckle to release adapter and sling
- 1.25" webbing with Duraflex® heavy-duty buckles

002

498



## VIPER SINGLE BUNGEE ONE POINT SLING

SKU: US1021 ONE SIZE FITS MOST

- Single bungee
- High-strength bungee (1/2" diameter)
- 1-1/8" webbing
- Includes two adapters: HK style snap hook and webbing strap



001

002

498



## ADDER DUAL BUNGEE ONE POINT SLING

SKU: US1022 ONE SIZE FITS MOST

- Dual bungee
- High-strength bungee (1/2" diameters)
- 1-1/8" webbing
- Includes two adapters: HK style snap hook and webbing strap



001

002

008

498



## CBT BUNGEE SLING

SKU: US1002 ONE SIZE FITS MOST

- Converts from two point to single point sling
- Dual bungee construction
- HK snap hook adapter covered with tube
- Side buckle to release adapter and sling
- 1.25" webbing, with Duraflex® buckles



001

002

008

498

## SPEEDY TWO POINT SLING

SKU: US1003 ONE SIZE FITS MOST

- Transition-lock with pull-tab allows quick adjustments
- Universal strap adapters
- Side buckle to release adapter and sling
- 1.25" webbing, with Duraflex® buckles



001

002

498



001

002

498

## QUICK ONE POINT SLING

SKU: US1008 ONE SIZE FITS MOST

### FEATURES

- Ambidextrous adjusting one point sling
- Transition-lock with pull-tab for adjustment
- Universal strap adapters
- Side-release buckle
- 1.25" webbing, with Duraflex® buckles



002

498

## PISTOL LANYARD

SKU: US1004 36" TOTAL LENGTH WHEN FULLY EXTENDED

### FEATURES

- Coiled wire with laminated rubber exterior
- Hook and loop fastening tab for belt attachment
- Attaches to your belt or PALS webbing
- Brand fastening tab for belt attachment
- Berry Compliant



001

002

498

## HK HOOK UPGRADE KIT

SKU: US1070 ONE SIZE FITS MOST

### FEATURES

- Upgrade kit is compatible with all USA made CONDOR slings
- HK snap hook adapter covered with elastic sleeve
- Spring loaded, steel snap shackle
- 1" wide slot for webbing





002

## 3 POINT SLING

SKU: 3PS

1.5" WIDTH

### FEATURES

- Multiple attachment adapters
- One, 1" attachment adapter
- One, 1" webbing adapter
- Standard A2 buttstock adapter
- Two cord attachments
- Fore-end adapter



002

SKU: T3PS

1.5" WIDTH

### FEATURES

- Multiple attachment adapters
- One front handguard sling adapter
- One, 1" attachment extender
- One buttstock adapter
- 1.5" wide webbing with transitioner

# HEADWEAR/ NECKWEAR

800.552.2554 | CONDOROUTDOOR.COM



## TACTICAL CAP

SKU: TC ONE SIZE FITS MOST

- 100% cotton
- Adjustable strap with metal buckle
- 3 hook & loop panels for patches
- 6-panel construction



## MESH TACTICAL CAP

SKU: TCM ONE SIZE FITS MOST

- Highly breathable mesh panel
- Adjustable hook & loop back strap
- 3 hook & loop panels for patches
- Moisture wicking mesh



## TACTICAL TEAM CAP

SKU: TCT ONE SIZE FITS MOST

- Easy embroidery front panel
- 1 X 1 loop panel on top for IR patch
- Loop panel on rear for ID patch
- Adjustable strap with metal buckle



## MESH TACTICAL TEAM CAP

SKU: TCTM ONE SIZE FITS MOST

- Easy embroidery front panel
- 1 X 1 loop panel on top for IR patch
- Loop panel on rear for ID patch
- Adjustable strap with metal buckle





## FLEX CAP

SKU: 161080

S/M: 7 - 7.4", L/XL: 7.5 - 7.75"

- 6 panel flexible jersey fitted material
- Extra stitching reinforcement
- Seamed front panel with full buckram
- Stretchable performance sweatband
- Embroidered eyelets
- Name tape panel, and IR patch panel on top of the cap



## FLEX TEAM CAP

SKU: 161131

S/M: 7 - 7.4", L/XL: 7.5 - 7.75"

- 6 panel flexible jersey fitted material
- Extra stitching reinforcements
- Seamed front panel with full buckram
- Stretchable performance sweatband
- Embroidered eyelets
- Top and back hook & loop panels for patches



## FLEX TACTICAL MESH CAP

SKU: 161140

S/M: 7 - 7.4", L/XL: 7.5 - 7.75"

- 6 panel flexible fitted material
- Polyester mesh back for ventilation
- Stretchable performance sweatband
- Extra stitching reinforcements
- Embroidered eyelets
- Name tape panel, and IR patch panel on top of the cap



## FLEX TACTICAL TEAM MESH CAP

SKU: 161244

S/M: 7 - 7.4", L/XL: 7.5 - 7.75"

- 6 panel flexible fitted material
- Polyester mesh back panel for ventilation
- Embroidered eyelets
- Name tape panel, and IR patch panel on top of the cap
- Extra stitching reinforcements and seamed front panel with full buckram





## SIGNATURE RANGE CAPSLING

SKU: 161084 ONE SIZE FITS MOST

- Adjustable hook & loop strap
- Buttonless top
- 3D embroidered emblem

002



## COOL MESH TACTICAL CAP

SKU: 161204 S/M: 7 - 7.4" L/XL: 7.5 - 7.75"

- UPF 50+ cool comfort performance stretchable knit
- 6 panel flexible fitted material
- Stretchable performance sweatband
- Non-structured firm front panel flexible fit
- Embroidered eyelets
- Name tape panel, and IR patch panel on top of cap

002



## CADET CAP

SKU: 161246/161246-Y 161246: ONE SIZE FITS MOST 161246-Y: YOUTH SIZE

- Adjustable hook & loop strap
- Embroidered Logo and Font

002



## YUKON FLEECE HAT

SKU: 161145 ONE SIZE FITS MOST

- Micro fleece material
- Fold down ear covers
- Elastic stretch material

002

018



## SHEMAUGH

SKU: 212

ONE SIZE FITS MOST

### FEATURES

- Seamless construction for comfort
- Anti-static and moisture wicking
- Stretchable polyester micro-fiber for comfort
- Multiple configurations

MOISTURE  
WICKING

BREATHABLE

ANTI-  
STATIC

001



002



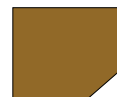
008



021



035



498



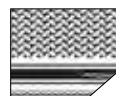
C001



C498



S001



S002



S498



## FLEECE MULTI-WRAP

SKU: 161109

ONE SIZE FITS MOST

### FEATURES

- Microfiber stretch fabric plus micro fleece for added warmth
- Stretch material allows multiple configurations
- Anti-static & moisture wicking

MOISTURE  
WICKING

BREATHABLE

ANTI-  
STATIC

001



002



498



800



## THERNO NECK GAITER

SKU: 221106

ONE SIZE FITS MOST

- Flexible microfleece material
- Can be worn as a neckwarmer or mask
- Elastic band for close fit

001

002

498



## REVERSIBLE GAITER

SKU: 221156

ONE SIZE FITS MOST

- Reversible neck gaiter
- Stretchable and breathable grid microfleece material
- Can be worn as a neck warmer or mask
- Elastic band for close fit

001

498



007 Urban Green

001 Olive Drab

## WATCH CAP

SKU: WC

ONE SIZE FITS

### FEATURES

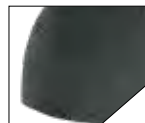
- Lightweight synthetic microfleece
- Flex/stretch wear
- Dual lock stitch seams



002 - BLACK



006 - NAVY



018 - GRAPHITE



498 - COYOTE BROWN



003 Tan

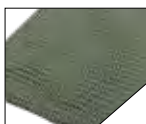
## SNIPER VEIL

SKU: 225

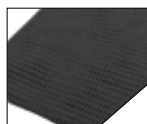
48"H x 40"W

### FEATURES

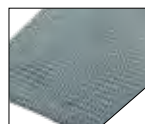
- Worn as scarf, use for concealment applications and more
- 100% cotton



001 - OLIVE DRAB



002 - BLACK



007 - FOLIAGE



001 Olive Drab/Black

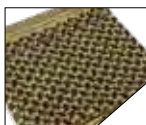
## SHEMAGH

SKU: 201

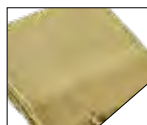
44"H x 44"W

### FEATURES

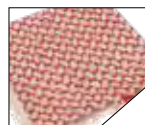
- Used to camouflage weaponry or as weather protection
- 100% cotton



002 - TAN/BLACK



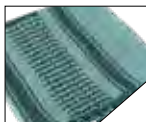
003 - COYOTE TAN



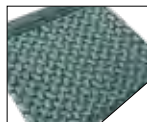
004 - RED/WHITE



005 - BLACK/WHITE



006 - FOLIAGE/BLACK



007 - FOLIAGE/GREEN



S001 - OD/BLACK SKULL



S002 - TAN/BLACK



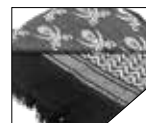
S005 - BLACK/WHITE



P001 - OD/BLACK PIRATE



P002 - TAN/BLACK



P005 - BLACK/WHITE

# ACCESSORIES

800.552.2554 | [CONDOROUTDOOR.COM](http://CONDOROUTDOOR.COM)



004 RWB



004 RWB REVERSE

## USA FLAG HOOK & LOOP PATCHES

SKU: 230/230R 2"H X 3"W

### FEATURES

- Hook backed for loop surfaces
- Variations also available in reverse (230R)
- 6/pack in the same color



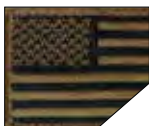
001



007 FOLIAGE



009 DESERT  
(REGULAR VERSION ONLY)



498



MULTICAM  
(REGULAR VERSION ONLY)



006 THIN BLUE LINE  
(REGULAR VERSION ONLY)

## US FLAG PVC PATCHES

SKU: 181004 2.5"H x 3"W

### FEATURES

- PVC material
- Hook backed for loop surfaces
- 6/pack in the same color



006



MULTICAM



498



498

## #MERICA PATCHES

SKU: 181016 2.5"H x 3"W

### FEATURES

- Hook backed for loop surfaces
- Woven Patch



001

## MEDIC PATCHES

SKU: 231

2"H x 2"W

- Hook backed for loop surfaces
- 6/pack in the same color



002



498



008



## IFAK PATCH

SKU: 181017

2"H x 4"W

- Hook backing attaches to any loop surface
- Woven Patch
- 6/pack



001

## DTOM PATCHES

SKU: 181015

2.5"H x 3"W

- Embroidered
- Hook backed for loop surfaces
- 6/pack in the same color



001

## BLOOD TYPE PATCHES

SKU: 229

1"H x 2"W

- Hook backed for loop surfaces
- Available in A, B, AB, O positive and negative
- 6/pack in the same color and bloodtype



498



007



001



018

## WHISKEY TANGO FOXTROT PVC PATCH

SKU: 181007

2"H x 3"W

- Embroidered
- Hook backed for loop surfaces
- 6/pack in the same color



## GRENADE POUCH

SKU: 221043 4"H x 2"W

- Zipper pouch
- Circle carabiner
- Holds up to 5 keys
- Zippered coin pocket

001

002

027

498



## CONDOR KEYCHAIN

SKU: 221188 4.25"H x 1"W

- Hook & loop Belt/webbing attachment strap
- Quick release snap hook

001

002



## BLOOD TYPE KEYCHAIN

SKU: 239 4.25"H x 1"W

- Hook & loop belt, loop for secure attachment
- Quick release snap hook
- Available in A, B, AB, O positive and negative
- 4/pack in the same color and blood type

001

002

007

498

800



## SUNGLASSES CASE

SKU: 217 7"H x 3"W x 2.5"D

- Semi-rigid construction with double zipper closure
- Soft interior lining to protect lenses
- Plastic snap hook attaches to D-ring
- MOLLE compatible (one mod strap required)

001

002

498

800



## PACK INSERT

SKU:VA7

16"H x 8.75"W x 3"D

Use the Pack Insert from Condor Outdoor to add a new dimension of organization to your most important bags. This pack insert is designed to work with the Condor Compact Assault Pack or any other similarly sized bags and packs. The insert allows users to organize their medic kit, mission pack, bugout bag, or tactical pack easily.

## FEATURES

- Hook & loop modular panels and pouches
- Two panels with elastic keeper
- Semi-rigid construction to keep insert in form
- Integrated grab handle
- One pouch with mesh window and flap closure
- Two pouches with vinyl window and flap closure

001

498

800.552.2554 | CONDOROUTDOOR.COM



## VA VINYL POUCH

SKU: 221217 5"H x 8"W x 2.5"D

- Webbing grab handle
- Clear Vinyl with zipper closure

027



## VA MESH POUCH

SKU: 221240 5"H x 8"W x 2.5"D

- Webbing grab handle
- Knitted mesh with zipper closure

027



## VA ORGANIZER

SKU: 221230 7.5"H x 8"W

- Hook Backing

027

498



## UNIVERSAL HOLSTER

SKU: UH1 ONE SIZE FITS MOST

- Hook backing attaches to any loop surface
- Wrap around design for universal fit
- Bungee cord retention

001

002

498

# VACUUM SEALED THERMAL BOTTLE

THE CONDOR 32/ 40 OZ VACUUM SEALED THERMAL BOTTLE IS PERFECT FOR ANYONE ON THE GO. ITS VACUUM SEALED INSULATION WILL KEEP YOUR BEVERAGE HOT OR COLD THROUGHOUT THE DAY. GREAT FOR KEEPING YOUR COFFEE HOT ON LONG DAYS AT THE OFFICE, YOUR WATER COLD FOR HARD WORKOUTS AT THE GYM, OR KEEP YOUR DRINKS AT YOUR DESIRED TEMPERATURE NO MATTER WHERE YOU GO.



## FEATURES



BPA  
FREE



STAINLESS  
STEEL



LEAK  
PROOF



DURABLE  
COATING



VACUUM  
INSULATION

22 1265: (32 Oz), 22 1266: (40 Oz)

AVAILABLE IN 001 OLIVE DRAB, 002 BLACK, & 029 FLAT DARK EARTH

# TORRENT RESERVOIR

LEAK PROOF, ODOR RESISTANT, DURABLE

SLIDER TOP CLOSURE



INSULATED TUBE COVER



HEAVY DUTY



EASY TO CLEAN



QUICK DISCONNECT VALVE



FAST WATER FLOW



## GEN II

221219: 3 LITERS 100OZ 15.75 H X 8 W 221220: 1.5 LITERS 50oz 13 H X 7 W

The Condor Outdoor Torrent Reservoir (Gen2) features a unique slide-top closure for efficient refilling and simplicity of cleaning. The integrated Quick-Disconnect valve will automatically shut off water flow when the tube is disconnected. This function allows you to conveniently access and remove the reservoir, without the hassle of removing and reinserting the hydration tube. The custom large bite-valve offers fast unrestricted water flow when needed most, with a quick shut-off bite valve when you don't.



LEAK  
PROOF



ODOR  
RESISTANT



PVC FREE



BPA FREE



DURABLE



002

## ELBOW PAD INSERT

SKU: 221252 7.25"H x 5"W

The Condor Elbow Pad Insert is designed specifically for our combat shirt (101065). It provides great impact protection against hard surfaces while maintaining comfort and pliability to form to your movement.

### FEATURES

- Durable, lightweight, and high density foam material
- Custom shape to remain pliable and form with movement
- Compatible with our Combat Shirt (101065)



002

## KNEEPAD INSERT

SKU: 221253 9"H x 6"W

The Condor Knee Pad Insert is designed specifically for our Odyssey Pants Gen III (101254) and our Paladin Tactical Pants (101200). It provides great impact protection against hard surfaces while maintaining comfort and pliability to form to your movement.

### FEATURES

- Durable, lightweight, and high density foam material
- Custom shape to remain pliable and form with movement
- Compatible with our Odyssey Pants Gen III (101254) and Paladin Tactical Pants (101200)



019

## KNEE PAD PRO INSERT

SKU: 221130 9"H x 6"W

### FEATURES

- Designed for use with Condor tactical pants
- High density foam for durability
- Protects knee from impact



## KNEE PAD

SKU: KPI

ONE SIZE FITS MOST

### FEATURES

- 0.5" density foam padding
- Non-slip rubber cap
- Dual hook & loop fastener

001

002

498



## KNEE PAD 2

SKU: KP2

ONE SIZE FITS MOST

### FEATURES

- 0.5" density foam padding
- Non-slip rubber cap
- Plastic buckle for easy on and off

001

002

498



## ELBOW PAD

SKU: EPI

ONE SIZE FITS MOST

### FEATURES

- 0.5" density foam padding
- Non-slip rubber cap
- Dual hook & loop fastener

001

002

498



## VERTICAL SHOULDER HOLSTER

SKU: ASH

ONE SIZE FITS MOST

- Modular ambidextrous design
- Padded holster with double snap retention strap
- Double mag pouches
- Fits most medium to large frame pistols
- Padded shoulder harness
- Fully adjustable straps

001

002

498



## UNIVERSAL SHOULDER HOLSTER

SKU: USH

ONE SIZE FITS MOST

- Modular ambidextrous design
- Padded holster with double snap retention strap
- Double mag pouches
- Fits most medium to large frame pistols
- Padded shoulder harness
- Fully adjustable straps

001

002

498



## TUBE COVER

SKU: US1013

29" LONG

- Genuine Crye Precision MultiCam®
- Easy installation
- Made with Berry Compliant hardware and materials
- 4/pack
- Accepts most hydration tubes on the market with Neoprene sleeves

008



## MOD STRAPS

SKU: 223/224

223: 4", 224: 6"

- Designed to attach modular accessories to web gear
- 4/pack in the same color and size

001

002

498



## ARSENAL KNIFE CASE

SKU: 221038

HOLDS UP TO SIX FOLDING KNIVES

- Hook & loop ID panel
- Neoprene lined padded sheaths
- Dual-fold design for compact carry
- Integrated carry handle

002

498



## VAULT TRI-FOLD WALLET

SKU: 235

4" H x 5" W

- Tri-fold wallet with single layer bill compartment
- Six card slots, two pockets and three SD card slots
- One external zippered coin pocket
- Easy access windowed ID pocket
- Adjustable/detachable neck lanyard

001

002

498



## M4/M16 BRASS CATCHER

SKU: 205

7.5" H x 8" W

- Mesh with zipper closure
- Hook & loop stripe to secure on handguard
- Lightly padded mesh

002



## 40L RAINCOVER

SKU: US1026

FITS UP TO 50L BAGS

- Berry compliant
- IR Treated
- Backcoated with fire retardant urethane
- Drawcord cinch
- Raincover pouch included

008





## HELMET PADS II

SKU: 221055

- Seven piece set
- Double layered shock absorbing foam
- Hook and loop patches with adhesive backing included

001

002

498



## SHOULDER STRAP

SKU: 232

27" X 47" IN LENGTH

- 1.5" shoulder strap
- Metal clip on ends
- Adjustable length

001

002

498



## SIAMESE SLIK CLIP KIT

SKU: 221092

- 10 Pieces per pack

001

002

498



## BUCKLE REPAIR KIT

SKU: 221067

2"Hx3"W

- One 2" buckle
- Two 1.5" buckles
- Four 1" buckles

001

002

498

# ***NEW APPLYING DEALERS TERMS AND CONDITIONS***

## **ORDERING INFORMATION**

- Prices are subject to change without notice
- Send orders by phone, fax, email or web
- Initial Order Amount: **\$1,000**
- Minimum order: **\$250**
- No guarantees on same day shipping requests
- All shipments are F.O.B. Irwindale, California

## **TERMS**

- We accept Visa, Mastercard, American Express, Money Orders and Certified Check (no C.O.D.)
- To establish company check or Net Terms, completion of Condor credit application is required.
- Please allow up to 30 days for credit check. (Filling out the form does not guarantee that the terms will be approved.)

## **AUTHORIZED DEALER CLAIMS AND RETURNS**

- No returns will be accepted without authorization. RMA# is required.
- All claims must be made within **10 days** upon receiving the goods.
- Defective goods must be received within **10 days** after the RMA# was issued.
- We cannot accept returns that are soiled, worn, that bear markings, stickers or tags not originally on the products.
- Other returns will be subject to 30% restocking fee with freight prepaid.

Condor Outdoor Products Inc. reserves the right to serve or refuse any application.

These Terms and Conditions supersede all previous documented and undocumented terms.

## **CONDOR MINIMUM ADVERTISED PRICE POLICY**

In order to protect the Condor Outdoor Products brand image and reputation for quality products, Condor Outdoor Products has adopted a Minimum Advertised Price Policy (MAP) for our products. This policy only concerns advertised price and in no way restricts or relates to the actual sale of any item. This policy is applicable to all forms of advertising including catalogs, mailings, consumer expo/shows, internet and any other electronic media. This policy relates equally to all Condor Outdoor Product distributors and dealers. Retailers who advertise a related product for sale below the MAP, shall have all pending orders suspended without further notice. All decisions under this policy will be made and enforced by Condor Outdoor Products unilaterally. No warning or "second chances" will be permitted. This policy may be modified by Condor Outdoor Products from time to time. Condor Outdoor Products does not seek, nor will it accept any agreement or understanding with respect to the prices you may advertise or charge at any time.

## **RESALE TO THIRD PARTIES**

Retailer agrees not to sell products of Condor Outdoor Products, Inc. to or through any third party websites, including, but not limited to, any on-line auction or online marketplace/store, such as eBay and Amazon. Condor Outdoor Products, Inc. strictly enforces this policy prohibiting resale of products to third parties and will suspend all pending orders from retailers immediately for violation of this policy.

## **CONDOR END USER PRODUCT WARRANTY**

Condor Outdoor Products Inc. guarantees its products for one year from the original date of purchase. Apparel warranty is for 90 days. This warranty covers the product for the original owner against defects in materials and workmanship. If the product ever fails during the warranty period due to a manufacturing or material defect, then Condor will repair or replace with like product at our discretion. This warranty does not cover damage caused by normal wear and tear, accidents, improper use, sun damage, or the natural breakdown of colors and material over time. Clothing items must be in un-worn, un-washed condition to be eligible for warranty. To make warranty claim, End User must return to the original Authorized Condor Dealer where the item was purchased and submit original sales receipt. Dealer will then contact Condor and follow its procedures.

# ADDITIONAL SERVICES

## OEM INFORMATION

Since 2006 Condor has been collaborating with other companies on custom works and private labeling. Special projects in the past have included off-road gear, movie props, custom Berry Compliant tactical gear, and much more. Please follow the guidelines if you would like us to assist you with your next big project:

- Production line queue priority is not guaranteed
- Please prepare a detailed product specification sheet for review
- **1000 pc minimum** order for smaller items OR **500 pc minimum** for medium to large items
- Overseas and USA factory production is available
- For more information on how to create OEM products, please call us at **800-552-2554** or email us at **INFO@CONDOROUTDOOR.COM**

## TESTING AND EVALUATION REQUIREMENTS

Here at Condor, we appreciate the feedback and hard-use operatives, warfighters, and enthusiasts put onto our gear. To help us improve our gear further, please submit your application by following the guidelines below:

- 50% MSRP Deposit is required for all non pre-approved T&E requests, deposit returned upon completion
- Send requests by email to **info@condoroutdoor.com** or visit our site **www.condoroutdoor.com**
- Please attach the following:
  - Resume, cover letter of relevant qualifications
  - Signed and returned T&E application form

## SPONSORSHIP REQUIREMENTS

For product evaluation, events and team sponsorships. Please follow the guidelines below:

Send requests by email to [social@condoroutdoor.com](mailto:social@condoroutdoor.com)

Please attach the following:

- For individuals and teams: Submit a resume or proposal, event schedule, cover letter with purpose, and ethics
- For events and media: Submit a proposal, rate card, analytics data, and a list of requested items
- If your category is not listed, please submit a complete proposal for our review
- Submitting the materials does not guarantee a sponsorship, all applications take **2-3 weeks** to review

